

\$949,900 - 2734 64 Avenue, Rural Leduc County

MLS® #E4456703

\$949,900

5 Bedroom, 4.00 Bathroom, 2,859 sqft

Rural on 0.01 Acres

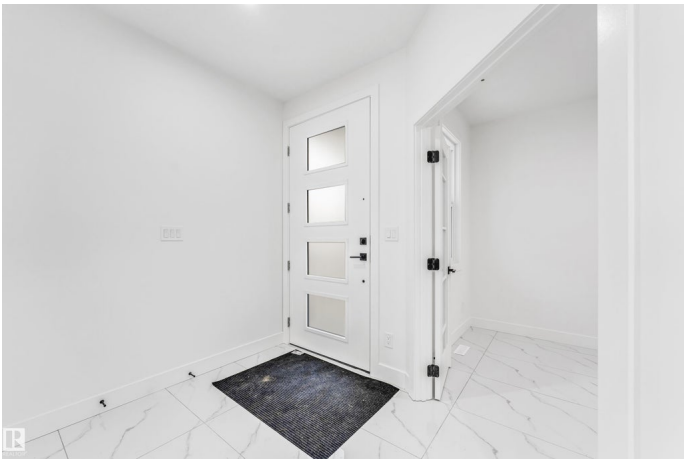
Churchill Meadow, Rural Leduc County, AB

****WALKOUT HOUSE**TRIPPLE GARAGE**CHURCHILL MEADOWS****From the moment you arrive, the striking exterior combines stone, wood accents, and clean lines that make an impressive first impression. Inside, the open layout flows seamlessly, offering a perfect balance of comfort and sophistication. The main level is tailored for both everyday living and entertaining, featuring a welcoming great room, a chef-inspired kitchen, and a spacious dining area filled with natural light. A private den provides flexibility for work or quiet retreat, while a well-planned mudroom adds convenience for busy households. Upstairs, youâ€™™ll find generously sized bedrooms, including a luxurious ownerâ€™™s suite with a spa-inspired ensuite and walk-in closet. A bonus room offers additional space for relaxation or family activities, and the upper laundry adds modern practicality. a layout that suits todayâ€™™s lifestyle, this home is a perfect blend of style and function.

Built in 2025

Essential Information

MLS® #	E4456703
Price	\$949,900
Bedrooms	5



Bathrooms	4.00
Full Baths	4
Square Footage	2,859
Acres	0.01
Year Built	2025
Type	Rural
Sub-Type	Detached Single Family
Style	2 Storey
Status	Active

Community Information

Address	2734 64 Avenue
Area	Rural Leduc County
Subdivision	Churchill Meadow
City	Rural Leduc County
County	ALBERTA
Province	AB
Postal Code	T4X 2C1

Amenities

Features	Ceiling 9 ft., Closet Organizers, Detectors Smoke, No Animal Home, No Smoking Home
----------	--

Interior

Interior Features	ensuite bathroom
Heating	Forced Air-1, Natural Gas
Fireplace	Yes
Stories	3
Has Basement	Yes
Basement	Full, Unfinished

Exterior

Exterior	Wood
Exterior Features	Playground Nearby, Schools, Shopping Nearby
Construction	Wood
Foundation	Concrete Perimeter

Additional Information

Date Listed	September 8th, 2025
-------------	---------------------

Days on Market 1

Zoning Zone 80

DATA IS DEEMED RELIABLE BUT IS NOT GUARANTEED ACCURATE BY THE REALTORS® ASSOCIATION OF EDMONTON. COPYRIGHT 2025 BY THE REALTORS® ASSOCIATION OF EDMONTON. ALL RIGHTS RESERVED. Trademarks are owned or controlled by the Canadian Real Estate Association (CREA) and identify real estate professionals who are members of CREA (REALTOR®, REALTORS®) and/or the quality of services they provide (MLS®, Multiple Listing Service®)

Listing information last updated on September 9th, 2025 at 5:32pm MDT