

Courtesy Of VK Kalra And Shubham Narang Of MaxWell Polaris

# \$829,000 - 6415 29 Street, Rural Leduc County

MLS® #E4456466

**\$829,000**

5 Bedroom, 4.00 Bathroom, 2,500 sqft

Rural on 0.18 Acres

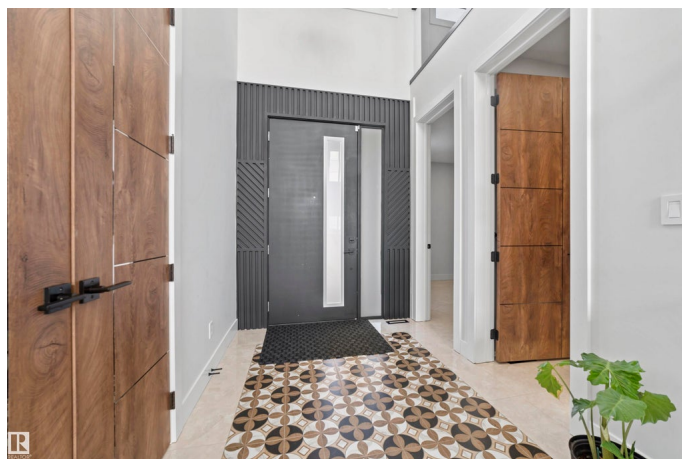
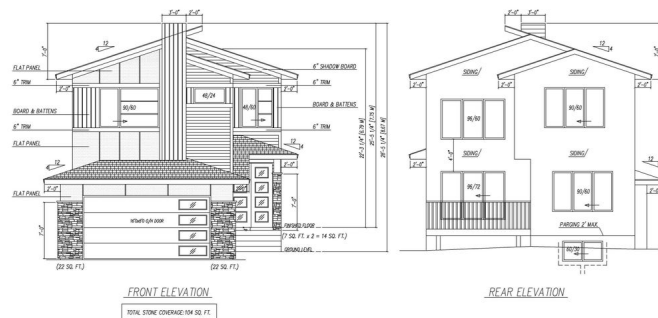
Churchill Meadow, Rural Leduc County, AB

This exceptional 32-pocket pie lot sits on over 7,685+ sq. ft of land and backs onto a beautiful green space & walking trail. Featuring a custom-built approx. 2,500 sq. ft home with 5 bed, out of which 4 are Masters each with ensuite bathrooms, this property offers spacious and thoughtful design throughout. Highlights include a spice kitchen, quartz countertops, 9'10-20 ft ceilings, open-to-below layout, ceiling speakers, feature walls, and an oversized double garage with an 18x8 ft garage door. Enjoy a larger backyard perfect for entertaining or relaxing. Conveniently located just 10-15 minutes max from Costco, Walmart, the airport, bilingual schools, and everyday amenities. Note- Photos shown may be from previously sold homes with similar layouts and finishes, provided for reference purposes only. Actual layout, finishes, and details may vary based on the availability of colors, materials, and other factors.

Built in 2025

## Essential Information

MLS® #	E4456466
Price	\$829,000
Bedrooms	5
Bathrooms	4.00



Full Baths	4
Square Footage	2,500
Acres	0.18
Year Built	2025
Type	Rural
Sub-Type	Detached Single Family
Style	2 Storey
Status	Active

### Community Information

Address	6415 29 Street
Area	Rural Leduc County
Subdivision	Churchill Meadow
City	Rural Leduc County
County	ALBERTA
Province	AB
Postal Code	T4X 3A7

### Amenities

Features	Carbon Monoxide Detectors, Ceiling 10 ft., Ceiling 9 ft., Closet Organizers, Deck, Detectors Smoke, Insulation-Upgraded, Low Flow Faucets/Shower, Low Flw/Dual Flush Toilet, No Animal Home, No Smoking Home, Smart/Program. Thermostat, Walkout Basement, Wet Bar, HRV System, Natural Gas BBQ Hookup, Natural Gas Stove Hookup, 9 ft. Basement Ceiling
----------	--

### Interior

Interior Features	ensuite bathroom
Heating	Forced Air-1, Natural Gas
Fireplace	Yes
Stories	2
Has Basement	Yes
Basement	Full, Unfinished

### Exterior

Exterior	Wood
Exterior Features	Airport Nearby, Golf Nearby, No Back Lane, Park/Reserve, Playground Nearby, Schools, Stream/Pond, See Remarks
Construction	Wood
Foundation	Concrete Perimeter

**Additional Information**

Date Listed	September 5th, 2025
Days on Market	4
Zoning	Zone 80

DATA IS DEEMED RELIABLE BUT IS NOT GUARANTEED ACCURATE BY THE REALTORS® ASSOCIATION OF EDMONTON. COPYRIGHT 2025 BY THE REALTORS® ASSOCIATION OF EDMONTON. ALL RIGHTS RESERVED.Trademarks are owned or controlled by the Canadian Real Estate Association (CREA) and identify real estate professionals who are members of CREA (REALTOR®, REALTORS®) and/or the quality of services they provide (MLS®, Multiple Listing Service®)

Listing information last updated on September 9th, 2025 at 5:17pm MDT