

\$659,900 - 6008 19 St, Rural Leduc County

MLS® #E4456450

\$659,900

3 Bedroom, 3.00 Bathroom, 2,368 sqft

Rural on 0.11 Acres

Irvine Creek, Rural Leduc County, AB

Discover this stunning 2,367 sqft home in the desirable Irvine Creek community, designed to meet all your family's needs. This spacious property features 2 bright living areas, a large kitchen with a completed deckâ€”perfect for entertainingâ€”and a huge walk-in pantry. The main floor offers a full bathroom, a versatile den, and elegant tile flooring throughout. Upstairs, you'll find 3 generously sized bedrooms, including a luxurious master with a 5-piece ensuite and walk-in closet. Every bedroom includes custom MDF shelving in closets, plus there's a separate prayer room, bonus room, and convenient upper-floor laundry. Only the bedrooms are carpeted, with vinyl flooring throughout the rest of the upper level for easy maintenance. A front-attached double garage includes a side entrance to the basement, offering potential for future development. With thoughtful design and quality finishes throughout, this home checks every box for comfort, function, and modern living.

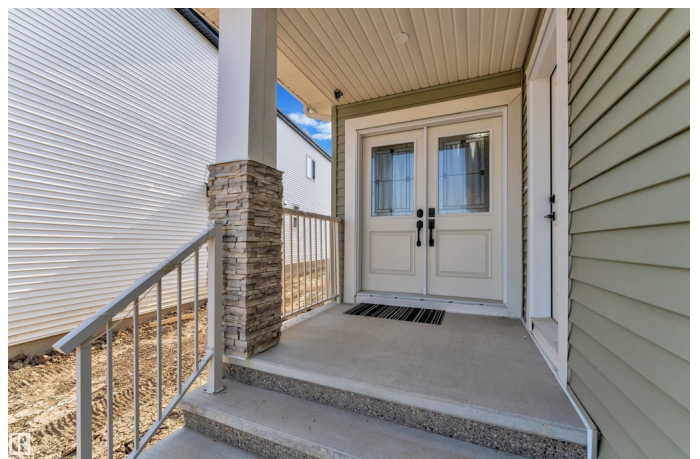
Built in 2024

Essential Information

MLS® # E4456450

Price \$659,900

Bedrooms 3



Bathrooms	3.00
Full Baths	3
Square Footage	2,368
Acres	0.11
Year Built	2024
Type	Rural
Sub-Type	Detached Single Family
Style	2 Storey
Status	Active

Community Information

Address	6008 19 St
Area	Rural Leduc County
Subdivision	Irvine Creek
City	Rural Leduc County
County	ALBERTA
Province	AB
Postal Code	T4X 3C4

Amenities

Features	No Animal Home, No Smoking Home
Parking Spaces	4

Interior

Interior Features	ensuite bathroom
Heating	Forced Air-2, Natural Gas
Stories	2
Has Basement	Yes
Basement	Full, Unfinished

Exterior

Exterior	Wood
Exterior Features	Airport Nearby, Park/Reserve, Playground Nearby
Construction	Wood
Foundation	Concrete Perimeter

Additional Information

Date Listed	September 5th, 2025
Days on Market	4

Zoning

Zone 80

DATA IS DEEMED RELIABLE BUT IS NOT GUARANTEED ACCURATE BY THE REALTORS® ASSOCIATION OF EDMONTON. COPYRIGHT 2025 BY THE REALTORS® ASSOCIATION OF EDMONTON. ALL RIGHTS RESERVED. Trademarks are owned or controlled by the Canadian Real Estate Association (CREA) and identify real estate professionals who are members of CREA (REALTOR®, REALTORS®) and/or the quality of services they provide (MLS®, Multiple Listing Service®)

Listing information last updated on September 9th, 2025 at 12:18pm MDT