

\$550,000 - 11026 110 Avenue, Edmonton

MLS® #E4456410

\$550,000

3 Bedroom, 2.00 Bathroom, 1,679 sqft
Single Family on 0.00 Acres

Queen Mary Park, Edmonton, AB

DOUBLE WIDE CORNER LOT! OVER 13,380 SQ.FT OF RS ZONED LAND COMBINED.THE LIST PRICE IS PER LOT. PROPERTIES 11026 - 110 Avenue & 11022-110 Avenue located next to 3 green fields/parks in Queen Mary Park. Steps from Nait campus, Kingsway Mall, Grant Macewan, & Downtown. Perfect for redevelopment or investment opportunity! Houses could be Sold separately.

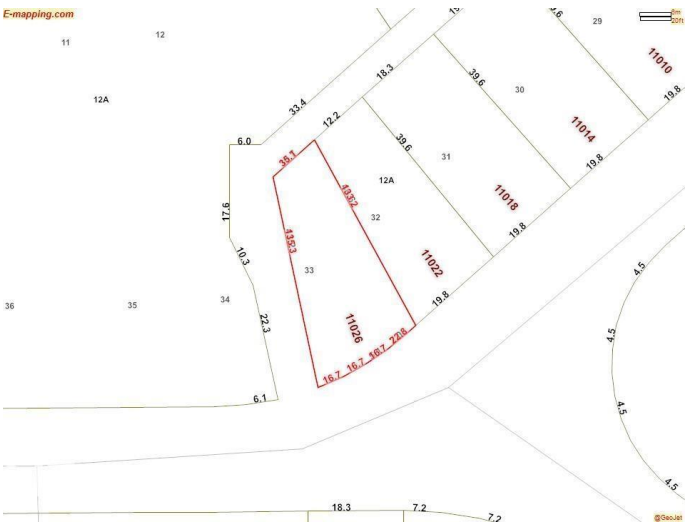
Built in 1953

Essential Information

MLS® #	E4456410
Price	\$550,000
Bedrooms	3
Bathrooms	2.00
Full Baths	2
Square Footage	1,679
Acres	0.00
Year Built	1953
Type	Single Family
Sub-Type	Detached Single Family
Style	1 and Half Storey
Status	Active

Community Information

Address 11026 110 Avenue



Area	Edmonton
Subdivision	Queen Mary Park
City	Edmonton
County	ALBERTA
Province	AB
Postal Code	T5H 1H9

Amenities

Amenities	See Remarks
Parking	Front Drive Access, Single Garage Detached

Interior

Appliances	See Remarks
Heating	Forced Air-1, Natural Gas
Stories	2
Has Basement	Yes
Basement	Full, Finished

Exterior

Exterior	Wood
Exterior Features	Corner Lot, Picnic Area, Playground Nearby, Public Swimming Pool, Public Transportation, Schools, Shopping Nearby, Subdividable Lot, View Downtown
Roof	Asphalt Shingles
Construction	Wood
Foundation	Concrete Perimeter

Additional Information

Date Listed	September 5th, 2025
Days on Market	61
Zoning	Zone 08

DATA IS DEEMED RELIABLE BUT IS NOT GUARANTEED ACCURATE BY THE REALTORS® ASSOCIATION OF EDMONTON. COPYRIGHT 2025 BY THE REALTORS® ASSOCIATION OF EDMONTON. ALL RIGHTS RESERVED. Trademarks are owned or controlled by the Canadian Real Estate Association (CREA) and identify real estate professionals who are members of CREA (REALTOR®, REALTORS®) and/or the quality of services they provide (MLS®, Multiple Listing Service®)

Listing information last updated on November 5th, 2025 at 1:02pm MST