

Courtesy Of Mouhamad Tarbine Of MaxWell Progressive

\$619,900 - 205 Ketyl Court, Leduc

MLS® #E4452679

\$619,900

4 Bedroom, 3.00 Bathroom, 2,288 sqft

Single Family on 0.00 Acres

West Haven Park, Leduc, AB

Welcome to West Haven! This brand-new home boasts high-quality luxury finishes throughout. The main floor features an open-concept design with a spacious living room, soaring open-to-above ceilings, and a striking feature wall with a gorgeous fireplace. The chef's kitchen is a dream, complete with premium finishes and a walk-through spice kitchen that includes a fully customized pantry. A full bathroom on the main floor provides flexibility, allowing the additional room to be used as a den, bedroom, playroom, or office. Upstairs, you'll find 9' ceilings and a stunning master suite with a vaulted ceiling, a lavish 5-piece ensuite, and a massive walk-in closet. Three additional generously sized bedrooms, a versatile bonus room, and a beautifully designed laundry room with a sink, countertops, and cabinetry complete the upper level. This home also features a separate side entrance to the basement, 9' ceilings on all three levels, elegant quartz countertops, and countless high-end details. Don't miss out



Built in 2025

Essential Information

MLS® # E4452679

Price \$619,900

Bedrooms 4
 Bathrooms 3.00
 Full Baths 3
 Square Footage 2,288
 Acres 0.00
 Year Built 2025
 Type Single Family
 Sub-Type Detached Single Family
 Style 2 Storey
 Status Active

Community Information

Address 205 Kettyl Court
 Area Leduc
 Subdivision West Haven Park
 City Leduc
 County ALBERTA
 Province AB
 Postal Code T9E 1S1

Amenities

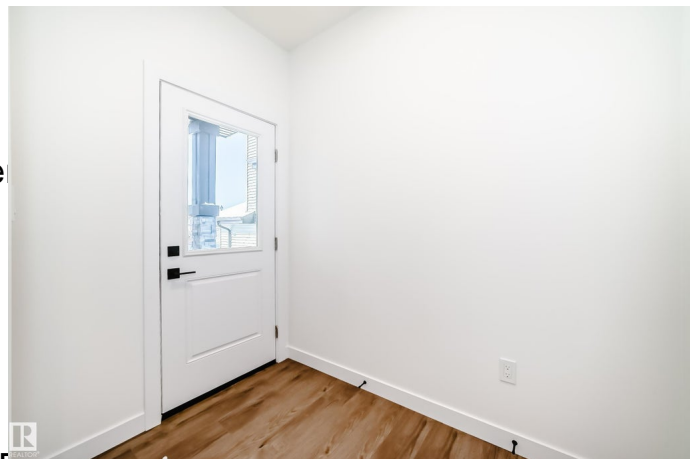
Amenities Ceiling 9 ft., Deck, Hot Water Ceiling
 Parking Double Garage Attached

Interior

Interior Features ensuite bathroom
 Appliances Dishwasher-Built-In, Hood Fan, Microwave Hood Fan, Oven-Built-In, Oven-Microwave, Refrigerator, Stove-Countertop Gas, Stove-Electric
 Heating Forced Air-1, Natural Gas
 Stories 2
 Has Basement Yes
 Basement Full, Unfinished

Exterior

Exterior Wood, Vinyl
 Exterior Features Airport Nearby, Golf Nearby, Park/Reserve, Schools, Shopping Nearby
 Roof Asphalt Shingles
 Construction Wood, Vinyl



Foundation Concrete Perimeter

Additional Information

Date Listed August 13th, 2025

Days on Market 73

Zoning Zone 81

DATA IS DEEMED RELIABLE BUT IS NOT GUARANTEED ACCURATE BY THE REALTORS® ASSOCIATION OF EDMONTON. COPYRIGHT 2025 BY THE REALTORS® ASSOCIATION OF EDMONTON. ALL RIGHTS RESERVED. Trademarks are owned or controlled by the Canadian Real Estate Association (CREA) and identify real estate professionals who are members of CREA (REALTOR®, REALTORS®) and/or the quality of services they provide (MLS®, Multiple Listing Service®)

Listing information last updated on October 25th, 2025 at 5:47pm MDT