

\$199,900 - 113 17404 64 Avenue, Edmonton

MLS® #E4450291

\$199,900

2 Bedroom, 2.00 Bathroom, 841 sqft

Condo / Townhouse on 0.00 Acres

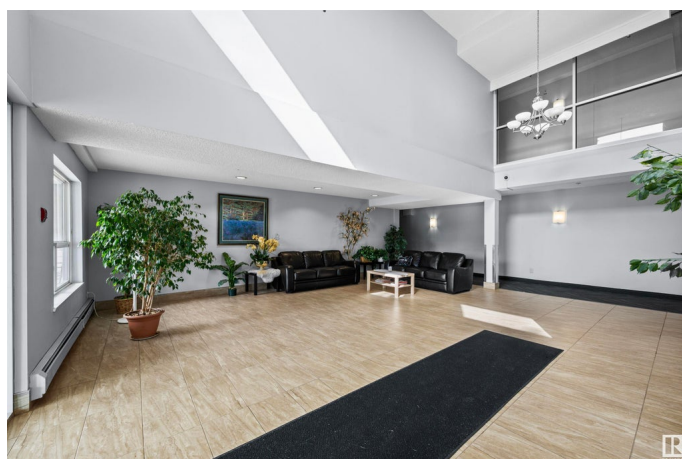
Callingwood South, Edmonton, AB

Welcome to this gorgeous TWO bedroom, TWO bathroom condo with underground parking, plus a surface stall, situated in the fantastic Westpark Condominium Building. Come+fall in love with this SPACIOUS condo that has been freshly painted. The timeless kitchen has classic cream cabinets, white appliances (with new fridge), eat-up bar+dining space. The open concept living room offers laminate floors (running through out), wall to wall windows+garden door to the large covered patio+green space. The primary bedroom has a walk through closet+4pc ensuite. Completing this condo is a second bedroom, 4pc bath, in-suite laundry, storage room, and an underground parking stall (with large storage cage 9ft x 3ft). Steps to parks, schools, shopping, restaurants, transit, Edmonton Lois Hole Library, Callingwood Farmers Market, and quick access to Whitemud, Anthony Henday and West Edmonton Mall. Move in and enjoy!

Built in 2004

Essential Information

MLS® #	E4450291
Price	\$199,900
Bedrooms	2
Bathrooms	2.00



Full Baths	2
Square Footage	841
Acres	0.00
Year Built	2004
Type	Condo / Townhouse
Sub-Type	Lowrise Apartment
Style	Single Level Apartment
Status	Active

Community Information

Address	113 17404 64 Avenue
Area	Edmonton
Subdivision	Callingwood South
City	Edmonton
County	ALBERTA
Province	AB
Postal Code	T5T 6X4

Amenities

Amenities	Parking-Extra, Parking-Visitor, Secured Parking, Security Door, Storage-Locker Room
Parking Spaces	2
Parking	Underground

Interior

Interior Features	ensuite bathroom
Appliances	Dishwasher-Built-In, Microwave Hood Fan, Refrigerator, Stacked Washer/Dryer, Stove-Electric, Window Coverings
Heating	Hot Water, Natural Gas
# of Stories	5
Stories	1
Has Basement	Yes
Basement	None, No Basement

Exterior

Exterior	Wood, Brick, Vinyl
Exterior Features	Golf Nearby, Playground Nearby, Public Swimming Pool, Public Transportation, Schools, Shopping Nearby, See Remarks
Roof	Tar & Gravel

Construction	Wood, Brick, Vinyl
Foundation	Concrete Perimeter

School Information

Elementary	Callingwood School
Middle	Hillcrest School
High	Jasper Place School

Additional Information

Date Listed	July 30th, 2025
Days on Market	2
Zoning	Zone 20
Condo Fee	\$465

DATA IS DEEMED RELIABLE BUT IS NOT GUARANTEED ACCURATE BY THE REALTORS® ASSOCIATION OF EDMONTON. COPYRIGHT 2025 BY THE REALTORS® ASSOCIATION OF EDMONTON. ALL RIGHTS RESERVED. Trademarks are owned or controlled by the Canadian Real Estate Association (CREA) and identify real estate professionals who are members of CREA (REALTOR®, REALTORS®) and/or the quality of services they provide (MLS®, Multiple Listing Service®)

Listing information last updated on August 1st, 2025 at 8:48am MDT