

## \$230,000 - 305 12650 142 Avenue, Edmonton

MLS® #E4450023

**\$230,000**

2 Bedroom, 2.00 Bathroom, 913 sqft

Condo / Townhouse on 0.00 Acres

Baranow, Edmonton, AB

Immaculately maintained, original owner, 2 bedroom/ 2 bathroom CORNER UNIT!

Located within walking distance to Northgate mall, public transportation, parks & MORE!

You can't beat this location. Upon entering the unit, you'll find a spacious entry that opens up to your OPEN CONCEPT LIVING SPACE. The kitchen has modern cabinetry, a tile backsplash, granite countertops, a full pantry & an island that is the perfect height for an eating bar. The kitchen opens to your dining/ living room space that is flooded w/ natural light from the large windows along the back and side of the unit. A benefit of being a corner unit. Both bedrooms are a generous size, & are on opposite sides of the unit. Perfect for roommates or kids. The primary room has a walkthrough closet & a 3pc ensuite w/ a glass shower. The other full bathroom is located by the other bedroom for added convenience. Other features include a WRAP AROUND BALCONY, a titled parking stall, in-suite laundry & MORE!

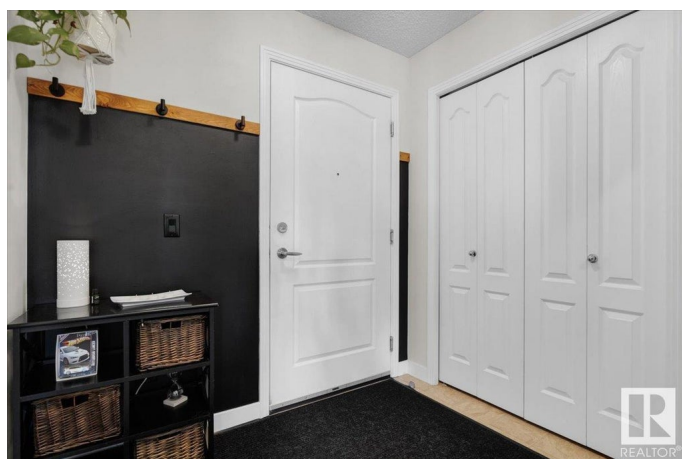
Built in 2014

### Essential Information

MLS® # E4450023

Price \$230,000

Bedrooms 2



Bathrooms	2.00
Full Baths	2
Square Footage	913
Acres	0.00
Year Built	2014
Type	Condo / Townhouse
Sub-Type	Lowrise Apartment
Style	Single Level Apartment
Status	Active

### Community Information

Address	305 12650 142 Avenue
Area	Edmonton
Subdivision	Baranow
City	Edmonton
County	ALBERTA
Province	AB
Postal Code	T5X 0J4

### Amenities

Amenities	Exercise Room, Parking-Plug-Ins, Parking-Visitor, Party Room
Parking Spaces	1
Parking	Stall

### Interior

Interior Features	ensuite bathroom
Appliances	Dishwasher-Built-In, Dryer, Oven-Microwave, Refrigerator, Stove-Electric, Washer, Window Coverings
Heating	Baseboard, Natural Gas
# of Stories	4
Stories	1
Has Basement	Yes
Basement	None, No Basement

### Exterior

Exterior	Wood, Vinyl
Exterior Features	Landscaped, Public Transportation, Shopping Nearby
Roof	Asphalt Shingles
Construction	Wood, Vinyl

Foundation                      Concrete Perimeter

**Additional Information**

Date Listed                      July 28th, 2025  
Days on Market                2  
Zoning                              Zone 27  
Condo Fee                        \$429

DATA IS DEEMED RELIABLE BUT IS NOT GUARANTEED ACCURATE BY THE REALTORS® ASSOCIATION OF EDMONTON. COPYRIGHT 2025 BY THE REALTORS® ASSOCIATION OF EDMONTON. ALL RIGHTS RESERVED.Trademarks are owned or controlled by the Canadian Real Estate Association (CREA) and identify real estate professionals who are members of CREA (REALTOR®, REALTORS®) and/or the quality of services they provide (MLS®, Multiple Listing Service®)  
Listing information last updated on July 30th, 2025 at 7:17pm MDT