

Courtesy Of Cody C LeClair Of RE/MAX River City

## \$449,900 - 15003 108 Avenue, Edmonton

MLS® #E4450015

**\$449,900**

4 Bedroom, 3.50 Bathroom, 1,201 sqft

Condo / Townhouse on 0.00 Acres

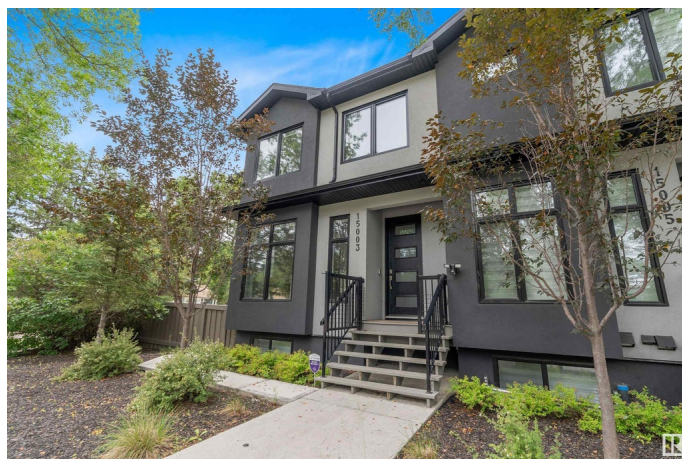
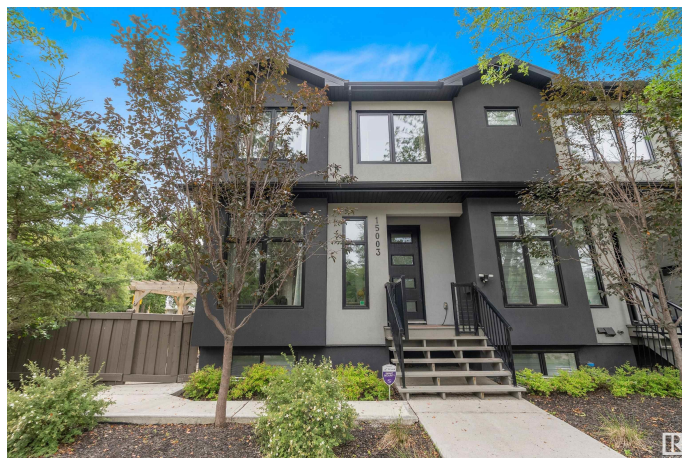
High Park (Edmonton), Edmonton, AB

Welcome to this beautifully maintained 4-bedroom, 4-bathroom corner townhouse in the heart of High Park. Bathed in natural light, this home boasts a warm and inviting atmosphere throughout. The spacious kitchen features generous counter and cabinet space—perfect for both everyday living and entertaining. Step outside to your private yard, an ideal setting for morning coffee or gatherings with friends and family. Upstairs, the primary suite offers a relaxing retreat with its own ensuite and ample closet space. Two additional bedrooms and a full bath complete the upper level. The fully finished basement adds even more living space with a large family room, fourth bedroom, and full bathroom. Stay cool all summer with central air conditioning, and enjoy the convenience of an attached garage. Ideally situated across from a park, this home offers beautiful, unobstructed views and the charm of a quiet, well-established neighborhood.

Built in 2017

### Essential Information

MLS® #	E4450015
Price	\$449,900
Bedrooms	4
Bathrooms	3.50



Full Baths	3
Half Baths	1
Square Footage	1,201
Acres	0.00
Year Built	2017
Type	Condo / Townhouse
Sub-Type	Townhouse
Style	2 Storey
Status	Active

### Community Information

Address	15003 108 Avenue
Area	Edmonton
Subdivision	High Park (Edmonton)
City	Edmonton
County	ALBERTA
Province	AB
Postal Code	T5E 5Y1

### Amenities

Amenities	Air Conditioner, See Remarks
Parking	Single Garage Detached

### Interior

Interior Features	ensuite bathroom
Appliances	Air Conditioning-Central, Dryer, Garage Control, Garage Opener, Microwave Hood Fan, Refrigerator, Storage Shed, Stove-Electric, Washer, Window Coverings
Heating	Forced Air-1, Natural Gas
Stories	3
Has Basement	Yes
Basement	Full, Finished

### Exterior

Exterior	Wood, Stucco
Exterior Features	Fenced, Flat Site, Landscaped, Park/Reserve, Public Transportation, Schools, See Remarks
Roof	Asphalt Shingles
Construction	Wood, Stucco

Foundation                      Concrete Perimeter

**Additional Information**

Date Listed                      July 28th, 2025

Days on Market                2

Zoning                            Zone 21

DATA IS DEEMED RELIABLE BUT IS NOT GUARANTEED ACCURATE BY THE REALTORS® ASSOCIATION OF EDMONTON. COPYRIGHT 2025 BY THE REALTORS® ASSOCIATION OF EDMONTON. ALL RIGHTS RESERVED.Trademarks are owned or controlled by the Canadian Real Estate Association (CREA) and identify real estate professionals who are members of CREA (REALTOR®, REALTORS®) and/or the quality of services they provide (MLS®, Multiple Listing Service®)

Listing information last updated on July 30th, 2025 at 1:32am MDT