

\$419,900 - 14424 65 Street, Edmonton

MLS® #E4449913

\$419,900

3 Bedroom, 2.00 Bathroom, 1,045 sqft

Single Family on 0.00 Acres

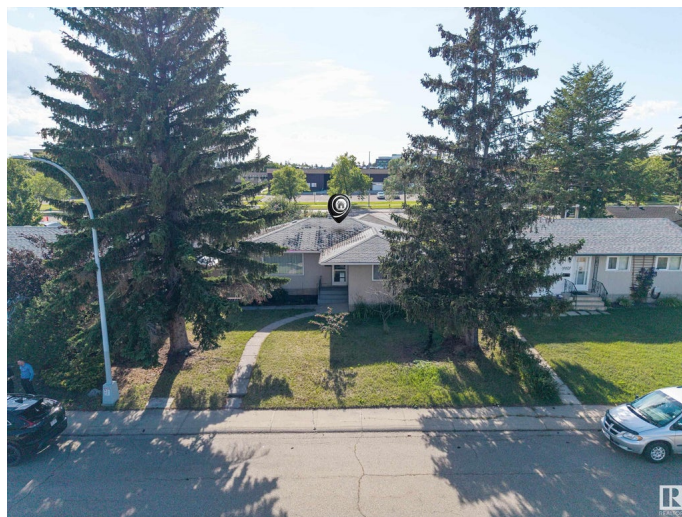
Mcleod, Edmonton, AB

Discover comfort and convenience with this stunning bungalow nestled on a quiet street. The home is situated steps away Londonderry Mall & the Leisure Centre as well as M.E. Lazerte High School. Featuring a large deck and a back yard with fruit trees, this home is ideal for outdoor enjoyment. Beat the summer heat with central AIR CONDITIONING, and enjoy cozy winters with a double detached garage—perfect for vehicles and storage. Have an RV? There's dedicated parking pad just for you! Upgrades include some newer windows, a high efficiency TRANE furnace, and a newer fridge. Three bedrooms and a bathroom complete the main level. The lower level is currently modelled into a recreation room, a cold room and a den along with a 3PC bath. Whether you're entertaining or enjoying a quiet evening, this home delivers on style, function, and modern living.

Built in 1967

Essential Information

| | |
|----------------|-----------|
| MLS® # | E4449913 |
| Price | \$419,900 |
| Bedrooms | 3 |
| Bathrooms | 2.00 |
| Full Baths | 2 |
| Square Footage | 1,045 |



| | |
|------------|------------------------|
| Acres | 0.00 |
| Year Built | 1967 |
| Type | Single Family |
| Sub-Type | Detached Single Family |
| Style | Bungalow |
| Status | Active |

Community Information

| | |
|-------------|-----------------|
| Address | 14424 65 Street |
| Area | Edmonton |
| Subdivision | Mcleod |
| City | Edmonton |
| County | ALBERTA |
| Province | AB |
| Postal Code | T5A 2E7 |

Amenities

| | |
|-----------|---|
| Amenities | Off Street Parking, On Street Parking, Air Conditioner, Deck, Hot Water Natural Gas, No Smoking Home, R.V. Storage, Vinyl Windows |
| Parking | Double Garage Detached |

Interior

| | |
|--------------|--|
| Appliances | Air Conditioning-Central, Dryer, Fan-Ceiling, Garage Control, Garage Opener, Hood Fan, Household Goods Included, Refrigerator, Storage Shed, Stove-Electric, Vacuum System Attachments, Vacuum Systems, Washer, Window Coverings |
| Heating | Forced Air-1, Natural Gas |
| Stories | 2 |
| Has Basement | Yes |
| Basement | Full, Partially Finished |

Exterior

| | |
|-------------------|---|
| Exterior | Wood, Stucco |
| Exterior Features | Back Lane, Fenced, Fruit Trees/Shrubs, Landscaped, Paved Lane, Playground Nearby, Public Swimming Pool, Public Transportation, Schools, Shopping Nearby |
| Roof | Asphalt Shingles |
| Construction | Wood, Stucco |
| Foundation | Concrete Perimeter |

School Information

High M.E. Lazerte

Additional Information

Date Listed July 26th, 2025

Days on Market 4

Zoning Zone 02

DATA IS DEEMED RELIABLE BUT IS NOT GUARANTEED ACCURATE BY THE REALTORS® ASSOCIATION OF EDMONTON. COPYRIGHT 2025 BY THE REALTORS® ASSOCIATION OF EDMONTON. ALL RIGHTS RESERVED. Trademarks are owned or controlled by the Canadian Real Estate Association (CREA) and identify real estate professionals who are members of CREA (REALTOR®, REALTORS®) and/or the quality of services they provide (MLS®, Multiple Listing Service®)

Listing information last updated on July 30th, 2025 at 8:02pm MDT