

\$365,000 - 20 4850 Terwillegar Common, Edmonton

MLS® #E4449879

\$365,000

3 Bedroom, 2.50 Bathroom, 1,235 sqft
Condo / Townhouse on 0.00 Acres

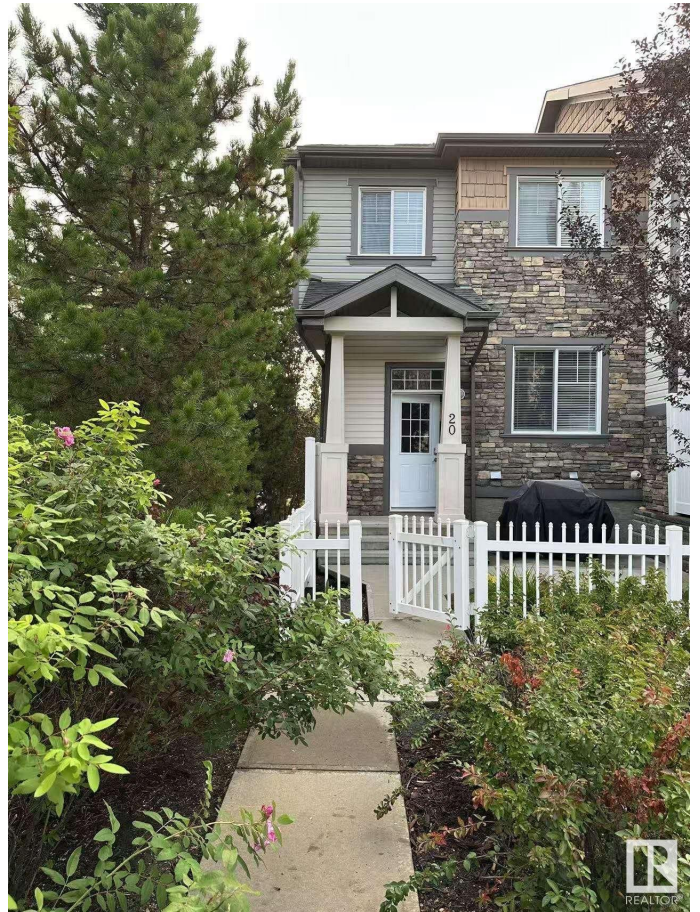
South Terwillegar, Edmonton, AB

Step through the serene garden courtyard and into this beautifully maintained end unit townhouse, nestled in one of most sought-after neighborhoods. From the moment you arrive, you'll feel like you've walked into a living masterpiece. Inside, the bright and spacious living room welcomes you with stunning views of the courtyard. The open-concept design flows seamlessly into the dining area and a modern kitchen featuring stainless steel appliances, quartz countertops, and a raised eating bar. Upstairs, you'll find a generous primary suite complete with a 3-piece ensuite and walk-in closet, along with two additional bedrooms and a full 4-piece bathroom. The ground level offers a convenient laundry and utility space, and grants direct access to the double attached garage. Freshly painted throughout with brand-new blinds, this home is truly move-in ready. Whether you're looking for your dream home or a smart investment opportunity, this gem is ready to impress.

Built in 2013

Essential Information

MLS® #	E4449879
Price	\$365,000
Bedrooms	3



Bathrooms	2.50
Full Baths	2
Half Baths	1
Square Footage	1,235
Acres	0.00
Year Built	2013
Type	Condo / Townhouse
Sub-Type	Townhouse
Style	2 Storey
Status	Active

Community Information

Address	20 4850 Terwillegar Common
Area	Edmonton
Subdivision	South Terwillegar
City	Edmonton
County	ALBERTA
Province	AB
Postal Code	T6R 0T6

Amenities

Amenities	No Animal Home, No Smoking Home, Natural Gas BBQ Hookup
Parking	Double Garage Attached

Interior

Interior Features	ensuite bathroom
Appliances	Dishwasher-Built-In, Dryer, Garage Opener, Microwave Hood Fan, Refrigerator, Stove-Electric, Washer, Window Coverings
Heating	Forced Air-1, Natural Gas
Stories	2
Has Basement	Yes
Basement	Partial, Unfinished

Exterior

Exterior	Wood, Stone, Vinyl
Exterior Features	Fenced, Landscaped, Paved Lane, Public Transportation, Shopping Nearby
Roof	Asphalt Shingles
Construction	Wood, Stone, Vinyl

Foundation Concrete Perimeter

Additional Information

Date Listed July 26th, 2025
Days on Market 5
Zoning Zone 14
HOA Fees 138
HOA Fees Freq. Annually
Condo Fee \$207



DATA IS DEEMED RELIABLE BUT IS NOT GUARANTEED ACCURATE BY THE REALTORS® ASSOCIATION OF EDMONTON. COPYRIGHT 2025 BY THE REALTORS® ASSOCIATION OF EDMONTON. ALL RIGHTS RESERVED.Trademarks are owned or controlled by the Canadian Real Estate Association (CREA) and identify real estate professionals who are members of CREA (REALTOR®, REALTORS®) and/or the quality of services they provide (MLS®, Multiple Listing Service®)
Listing information last updated on July 30th, 2025 at 10:32pm MDT