

\$99,999 - 203 9028 Jasper Av, Edmonton

MLS® #E4449853

\$99,999

2 Bedroom, 1.00 Bathroom, 903 sqft

Condo / Townhouse on 0.00 Acres

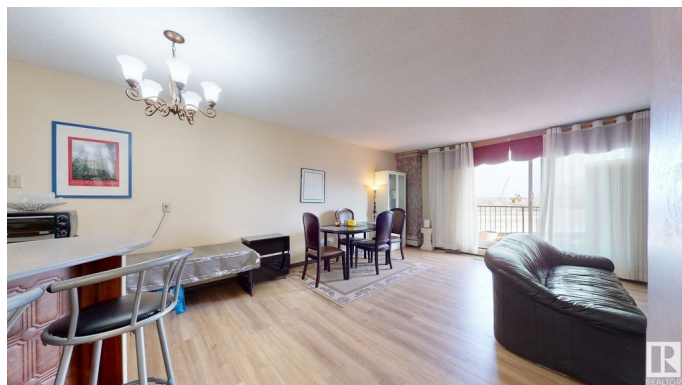
Boyle Street, Edmonton, AB

Downtown Condo with Stunning River Valley Views & All Utilities Included! This bright and spacious 2-bedroom, 1-bath condo offers unbeatable value in the heart of downtown Edmonton. Enjoy breathtaking panoramic views of the River Valley from your living space and experience true convenience with all utilities included – HEAT, WATER & ELECTRICITY – making this an ideal choice for first-time buyers, students, young professionals, or investors. Additional features include: One assigned Underground PARKING stall & Secure STORAGE space for added convenience. Close proximity to the Ice District, Commonwealth Recreation Centre, LRT, shopping, restaurants, caf  s, nightlife, and the River Valley walking/biking trails. Whether you’re looking to live, rent, or invest, this property is a smart move in one of Edmonton’s most desirable central communities.

Built in 1971

Essential Information

| | |
|------------|----------|
| MLS® # | E4449853 |
| Price | \$99,999 |
| Bedrooms | 2 |
| Bathrooms | 1.00 |
| Full Baths | 1 |



| | |
|----------------|------------------------|
| Square Footage | 903 |
| Acres | 0.00 |
| Year Built | 1971 |
| Type | Condo / Townhouse |
| Sub-Type | Apartment High Rise |
| Style | Single Level Apartment |
| Status | Active |

Community Information

| | |
|-------------|--------------------|
| Address | 203 9028 Jasper Av |
| Area | Edmonton |
| Subdivision | Boyle Street |
| City | Edmonton |
| County | ALBERTA |
| Province | AB |
| Postal Code | T5H 3S8 |

Amenities

| | |
|-----------|-------------|
| Amenities | See Remarks |
| Parking | Underground |

Interior

| | |
|--------------|---|
| Appliances | Dishwasher-Built-In, Hood Fan, Refrigerator, Stove-Electric |
| Heating | Hot Water, See Remarks |
| # of Stories | 11 |
| Stories | 1 |
| Has Basement | Yes |
| Basement | None, No Basement |

Exterior

| | |
|-------------------|---|
| Exterior | Brick |
| Exterior Features | Golf Nearby, Playground Nearby, Public Transportation, River Valley View, River View, Shopping Nearby, View City, View Downtown |
| Roof | Tar & Gravel |
| Construction | Brick |
| Foundation | Concrete Perimeter |

Additional Information

| | |
|-------------|-----------------|
| Date Listed | July 25th, 2025 |
|-------------|-----------------|

| | |
|----------------|---------|
| Days on Market | 5 |
| Zoning | Zone 13 |
| Condo Fee | \$866 |

DATA IS DEEMED RELIABLE BUT IS NOT GUARANTEED ACCURATE BY THE REALTORS® ASSOCIATION OF EDMONTON. COPYRIGHT 2025 BY THE REALTORS® ASSOCIATION OF EDMONTON. ALL RIGHTS RESERVED.Trademarks are owned or controlled by the Canadian Real Estate Association (CREA) and identify real estate professionals who are members of CREA (REALTOR®, REALTORS®) and/or the quality of services they provide (MLS®, Multiple Listing Service®)

Listing information last updated on July 30th, 2025 at 2:17am MDT