

\$479,900 - 2527 Hanna Crescent, Edmonton

MLS® #E4449800

\$479,900

3 Bedroom, 2.50 Bathroom, 1,118 sqft

Single Family on 0.00 Acres

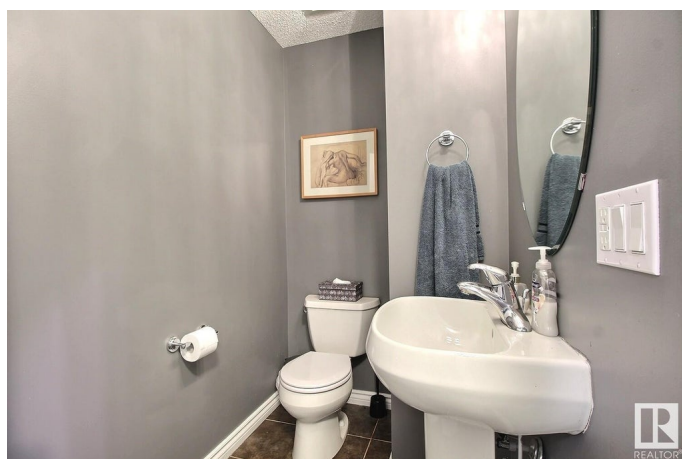
Haddow, Edmonton, AB

Exceptional opportunity to own this executive bungalow in Haddow at only \$479,900. 2+1 bedrooms with a main floor primary suite with walk in closet & full ensuite. Second bedroom on the main floor perfect for an office or guests & lastly a large 3rd bedroom in the basement. The main floor provides a open concept great room with hardwood floors throughout, vaulted ceilings, gas fireplace, large picture window looking out to your landscaped yard & functional kitchen with raised eating bar. The fully finished basement offers a sprawling rec. room perfect for kids to play, pool table or theatre space plus, a 4pc. bathroom, 3rd bedroom & storage room. Other features include A/C, large deck with privacy wall, hot tub & fully fenced yard.

Built in 2005

Essential Information

MLS® #	E4449800
Price	\$479,900
Bedrooms	3
Bathrooms	2.50
Full Baths	2
Half Baths	1
Square Footage	1,118
Acres	0.00



Year Built	2005
Type	Single Family
Sub-Type	Detached Single Family
Style	Bungalow
Status	Active

Community Information

Address	2527 Hanna Crescent
Area	Edmonton
Subdivision	Haddow
City	Edmonton
County	ALBERTA
Province	AB
Postal Code	T6R 3P7

Amenities

Amenities	Air Conditioner, Deck, Vaulted Ceiling
Parking	Double Garage Attached

Interior

Interior Features	ensuite bathroom
Appliances	Air Conditioning-Central, Dishwasher-Built-In, Dryer, Microwave Hood Fan, Refrigerator, Stove-Electric, Washer, Window Coverings, Garage Heater, Hot Tub
Heating	Forced Air-1, Natural Gas
Fireplace	Yes
Fireplaces	None
Stories	2
Has Basement	Yes
Basement	Full, Finished

Exterior

Exterior	Wood, Vinyl
Exterior Features	Fenced, Landscaped, No Back Lane, Public Swimming Pool, Public Transportation, Schools, Shopping Nearby
Roof	Asphalt Shingles
Construction	Wood, Vinyl
Foundation	Concrete Perimeter

Additional Information

Date Listed July 25th, 2025

Days on Market 6

Zoning Zone 14

DATA IS DEEMED RELIABLE BUT IS NOT GUARANTEED ACCURATE BY THE REALTORS® ASSOCIATION OF EDMONTON. COPYRIGHT 2025 BY THE REALTORS® ASSOCIATION OF EDMONTON. ALL RIGHTS RESERVED. Trademarks are owned or controlled by the Canadian Real Estate Association (CREA) and identify real estate professionals who are members of CREA (REALTOR®, REALTORS®) and/or the quality of services they provide (MLS®, Multiple Listing Service®)

Listing information last updated on July 30th, 2025 at 11:02pm MDT