

\$185,000 - 1201 9835 113 Street, Edmonton

MLS® #E4449611

\$185,000

2 Bedroom, 1.00 Bathroom, 1,062 sqft

Condo / Townhouse on 0.00 Acres

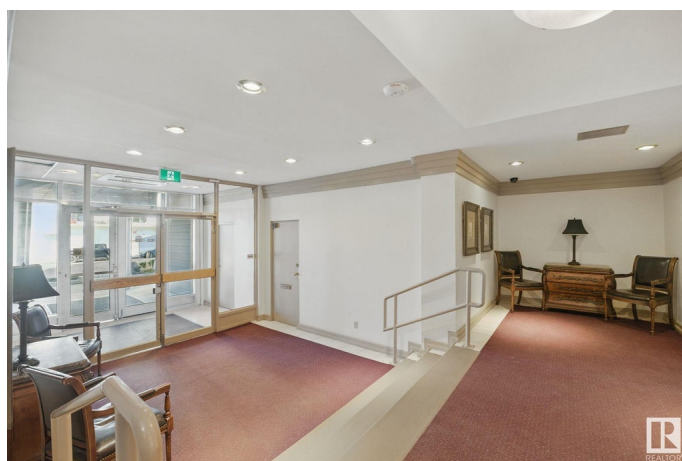
W&hkw&antwin, Edmonton, AB

Welcome to this bright and spacious 2 bed, 1 bath condo on the 12th floor of Victoria Park Tower! Enjoy stunning south views of the river valley and golf course, plus east-facing views of the downtown skyline. The kitchen and bathroom have been updated with modern cabinets, countertops, and newer appliances. Both bedrooms are generously sized with ample closet space. Carpets have been recently cleaned and stretched. Building amenities include a fully equipped gym and a rooftop patio with incredible views. Prime location near the river valley, trails, and downtown!

Built in 1969

Essential Information

MLS® #	E4449611
Price	\$185,000
Bedrooms	2
Bathrooms	1.00
Full Baths	1
Square Footage	1,062
Acres	0.00
Year Built	1969
Type	Condo / Townhouse
Sub-Type	Apartment High Rise
Style	Single Level Apartment



Status Active

Community Information

Address 1201 9835 113 Street
Area Edmonton
Subdivision W&hkw&ntwin
City Edmonton
County ALBERTA
Province AB
Postal Code T5K 1N4

Amenities

Amenities Social Rooms, Rooftop Deck/Patio
Parking Parkade

Interior

Appliances Dishwasher-Built-In, Microwave Hood Fan, Stove-Countertop Electric, Curtains and Blinds
Heating Hot Water, Natural Gas
of Stories 17
Stories 1
Has Basement Yes
Basement See Remarks

Exterior

Exterior Concrete, Stucco
Exterior Features Golf Nearby, Hillside, River Valley View, Shopping Nearby, View City, View Downtown
Roof Flat, Tar & Gravel
Construction Concrete, Stucco
Foundation Concrete Perimeter

Additional Information

Date Listed July 25th, 2025
Days on Market 5
Zoning Zone 12
Condo Fee \$873

DATA IS DEEMED RELIABLE BUT IS NOT GUARANTEED ACCURATE BY THE REALTORS® ASSOCIATION OF EDMONTON. COPYRIGHT 2025 BY THE REALTORS® ASSOCIATION OF EDMONTON. ALL RIGHTS RESERVED.Trademarks are owned or controlled by the Canadian Real Estate Association (CREA) and identify real

estate professionals who are members of CREA (REALTOR®®, REALTORS®®) and/or the quality of services they provide (MLS®®, Multiple Listing Service®®)

Listing information last updated on July 30th, 2025 at 5:32pm MDT