

Courtesy Of Naveen Monga Of MaxWell Polaris

## \$799,000 - 210 4935 55 Avenue, Edmonton

MLS® #E4449497

**\$799,000**

0 Bedroom, 0.00 Bathroom,  
Office on 0.00 Acres

Pylypow Industrial, Edmonton, AB

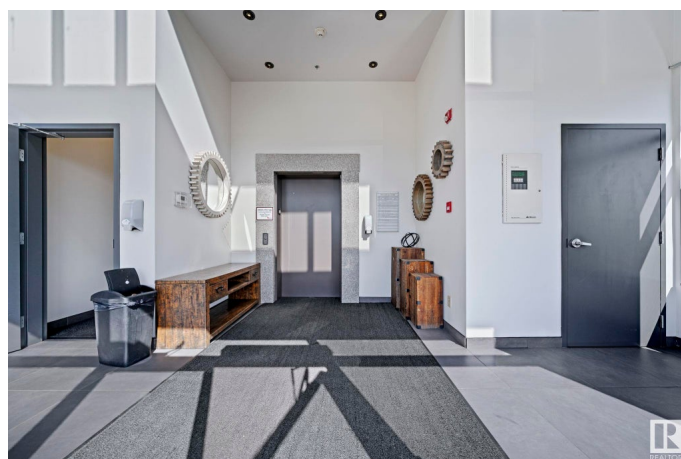
Prime Location, State-of-the-Art Amenities

This fully improved 2008 sq. ft. second-floor office condo in the prestigious Professional Centre offers a sophisticated workspace for discerning professionals. Strategically located with direct exposure to the 50th Street corridor and easy access to Anthony Henday and Whitemud Freeway, this property provides unparalleled convenience. Elegant Design, Functional Layout The office features: - offices, including executive-sized window offices with abundant natural light - A generously sized board room perfect for meetings and presentations - An attractive reception and waiting area to impress clients - A kitchenette for staff convenience - A private in-suite washroom Amenities and Features - Fully air-conditioned for a comfortable working environment - Elevator access for easy mobility - Multi-station male/female washrooms in the common area - Zoned IB, suitable for various professional office uses Ideal for Professional Office Users Don't Miss This Opportunity!

Built in 2010

### Essential Information

MLS® #	E4449497
Price	\$799,000



Bathrooms	0.00
Acres	0.00
Year Built	2010
Type	Office
Status	Active

### Community Information

Address	210 4935 55 Avenue
Area	Edmonton
Subdivision	Pylypow Industrial
City	Edmonton
County	ALBERTA
Province	AB
Postal Code	T6B 3S3

### Exterior

Exterior	Wood Frame, Mixed, Steel Frame
Construction	Wood Frame, Mixed, Steel Frame

### Additional Information

Date Listed	July 24th, 2025
Days on Market	2
Zoning	Zone 42

DATA IS DEEMED RELIABLE BUT IS NOT GUARANTEED ACCURATE BY THE REALTORS® ASSOCIATION OF EDMONTON. COPYRIGHT 2025 BY THE REALTORS® ASSOCIATION OF EDMONTON. ALL RIGHTS RESERVED. Trademarks are owned or controlled by the Canadian Real Estate Association (CREA) and identify real estate professionals who are members of CREA (REALTOR®, REALTORS®) and/or the quality of services they provide (MLS®, Multiple Listing Service®)

Listing information last updated on July 26th, 2025 at 7:32am MDT