

## \$399,000 - 3903 160 Avenue, Edmonton

MLS® #E4449474

**\$399,000**

3 Bedroom, 2.50 Bathroom, 1,461 sqft

Single Family on 0.00 Acres

Brintnell, Edmonton, AB

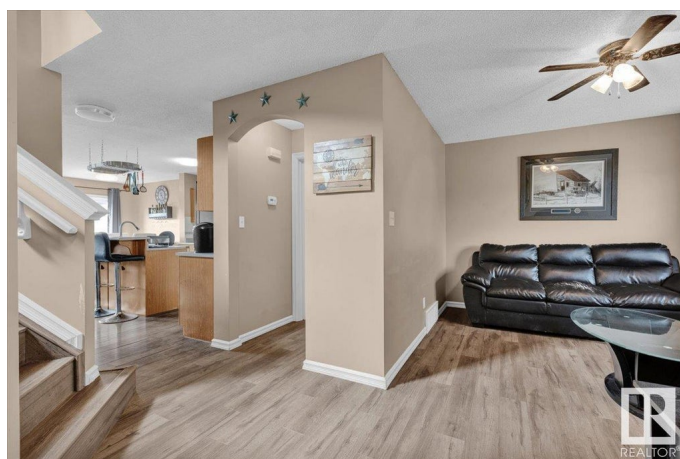
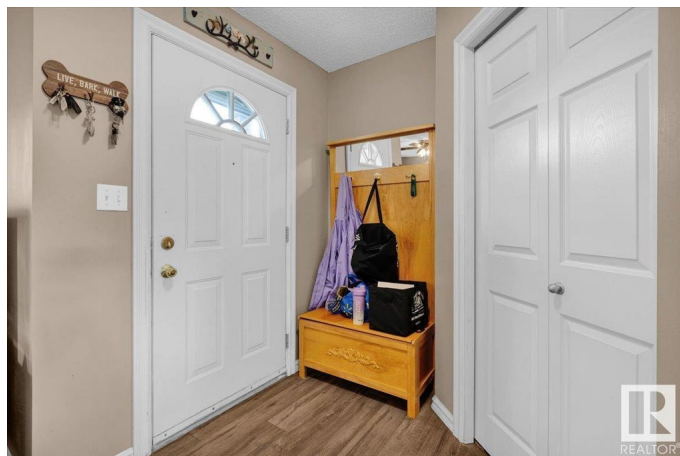
Welcome to this charming 2-storey home on a desirable corner lot! Enjoy the fully fenced backyard with deck, perfect for outdoor living, plus off-street parking via the back lane.

Inside, you are greeted by the front foyer and bright main living room. Leading to an open concept kitchen, dining, and family room with cozy gas fireplace. The kitchen features a corner pantry and island with breakfast barâ€”ideal for entertaining. Upstairs offers convenient laundry, 2 spacious bedrooms, a 4pc bath, and a private primary retreat with 4pc ensuite and walk-in closet. Located close to parks, playgrounds, and all amenitiesâ€”this home blends comfort, style, and convenience.

Built in 2004

### Essential Information

MLS® #	E4449474
Price	\$399,000
Bedrooms	3
Bathrooms	2.50
Full Baths	2
Half Baths	1
Square Footage	1,461
Acres	0.00
Year Built	2004
Type	Single Family



Sub-Type	Detached Single Family
Style	2 Storey
Status	Active

### Community Information

Address	3903 160 Avenue
Area	Edmonton
Subdivision	Brintnell
City	Edmonton
County	ALBERTA
Province	AB
Postal Code	T5Y 3J7

### Amenities

Amenities	Off Street Parking, Deck
Parking	No Garage, Rear Drive Access

### Interior

Interior Features	ensuite bathroom
Appliances	Dishwasher-Built-In, Dryer, Hood Fan, Oven-Microwave, Refrigerator, Stove-Electric, Washer
Heating	Forced Air-1, Natural Gas
Fireplace	Yes
Fireplaces	Mantel, Tile Surround
Stories	2
Has Basement	Yes
Basement	Full, Unfinished

### Exterior

Exterior	Wood, Vinyl
Exterior Features	Back Lane, Corner Lot, Fenced, Landscaped, Park/Reserve, Playground Nearby, Public Transportation, Schools, Shopping Nearby
Roof	Asphalt Shingles
Construction	Wood, Vinyl
Foundation	Concrete Perimeter

### Additional Information

Date Listed	July 24th, 2025
Days on Market	7

## Zoning

## Zone 03

DATA IS DEEMED RELIABLE BUT IS NOT GUARANTEED ACCURATE BY THE REALTORS® ASSOCIATION OF EDMONTON. COPYRIGHT 2025 BY THE REALTORS® ASSOCIATION OF EDMONTON. ALL RIGHTS RESERVED. Trademarks are owned or controlled by the Canadian Real Estate Association (CREA) and identify real estate professionals who are members of CREA (REALTOR®, REALTORS®) and/or the quality of services they provide (MLS®, Multiple Listing Service®)

Listing information last updated on July 31st, 2025 at 3:48pm MDT