

\$849,900 - 6474 King Wynd, Edmonton

MLS® #E4448251

\$849,900

5 Bedroom, 4.00 Bathroom, 2,422 sqft

Single Family on 0.00 Acres

Keswick Area, Edmonton, AB

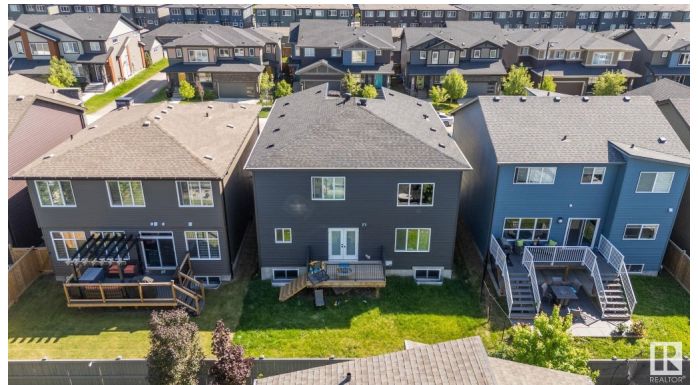
LUXURY STREETSCAPE STYLE HOME in the beautiful community of Arbours of Keswick with GOLD LUXURIOUS FINISHINGS AND A 2-BDRM LEGAL BASEMENT SUITE. Enter this open concept home w/DEN and HUGE WINDOW enclosed by a sliding Barn Door, FULL BATH ON THE MAIN FLOOR, Huge OPEN TO BELOW living room, A CUSTOM FIREPLACE w/FEATURE WALL and a DINING NOOK. Custom-designed Kitchen equipped with Stainless steel Appliances, Built-in Microwave and Oven and a SPICE KITCHEN with GAS RANGE. Upstairs you'll find a HUGE BONUS ROOM WITH CUSTOM ACCENT WALL AND A GLASS RAILING BALCONY. The MASTER BEDROOM showcases a lavish ensuite comprising of a stand-up shower with niche, soaker tub and a huge walk-in closet w/his&her sinks. Other 2 secondary bedrooms with a common bathroom and laundry room finishes the Upper Floor. LEGAL BASEMENT SUITE comes with beautiful kitchen, 2 beds, separate laundry, full bath/living rm. WALKING DISTANCE TO K-9 SCHOOL! All major amenities including currents shopping nearby. Call this Home now!

Built in 2022

Essential Information

MLS® #

E4448251



Price	\$849,900
Bedrooms	5
Bathrooms	4.00
Full Baths	4
Square Footage	2,422
Acres	0.00
Year Built	2022
Type	Single Family
Sub-Type	Detached Single Family
Style	2 Storey
Status	Active

Community Information

Address	6474 King Wynd
Area	Edmonton
Subdivision	Keswick Area
City	Edmonton
County	ALBERTA
Province	AB
Postal Code	T6W 1A5

Amenities

Amenities	Ceiling 9 ft., Deck
Parking	Double Garage Attached

Interior

Interior Features	ensuite bathroom
Appliances	Dryer, Garage Control, Garage Opener, Hood Fan, Oven-Microwave, Stacked Washer/Dryer, Stove-Countertop Electric, Washer, Refrigerators-Two, Stoves-Two, Dishwasher-Two
Heating	Forced Air-1, Natural Gas
Fireplace	Yes
Fireplaces	Insert
Stories	3
Has Suite	Yes
Has Basement	Yes
Basement	Full, Finished

Exterior

Exterior	Wood, Stone, Vinyl
Exterior Features	Golf Nearby, Landscaped, Picnic Area, Playground Nearby, Public Transportation, Schools, Shopping Nearby
Roof	Asphalt Shingles
Construction	Wood, Stone, Vinyl
Foundation	Concrete Perimeter

School Information

Elementary	Joey Moss School
------------	------------------

Additional Information

Date Listed	July 17th, 2025
Days on Market	14
Zoning	Zone 56

DATA IS DEEMED RELIABLE BUT IS NOT GUARANTEED ACCURATE BY THE REALTORS® ASSOCIATION OF EDMONTON. COPYRIGHT 2025 BY THE REALTORS® ASSOCIATION OF EDMONTON. ALL RIGHTS RESERVED.Trademarks are owned or controlled by the Canadian Real Estate Association (CREA) and identify real estate professionals who are members of CREA (REALTOR®, REALTORS®) and/or the quality of services they provide (MLS®, Multiple Listing Service®)

Listing information last updated on July 30th, 2025 at 10:02pm MDT