

\$424,900 - 133 Plum Crescent, Wetaskiwin

MLS® #E4447734

\$424,900

6 Bedroom, 3.00 Bathroom, 1,305 sqft

Single Family on 0.00 Acres

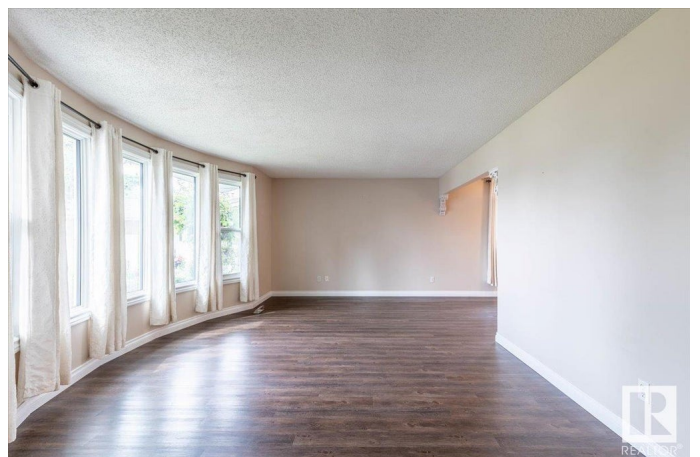
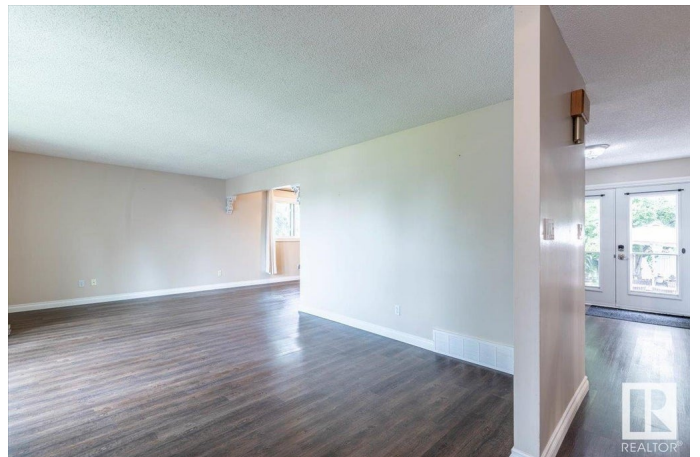
North Centennial, Wetaskiwin, AB

Location! Location! Location! Beautiful 5 Bedroom, 4-Level Split Home situated on a large pie-shaped lot, nestled in Plum Crescent. Pride of ownership beams at this property. Spacious floor-plan w/ tons of living space, enough for the whole family. Vinyl plank flooring through-out, formal dining room & functional kitchen w/ 4 appliances included. You will enjoy the cozy family room w/ wood-burning fireplace, a great space for gathering. Some recent updates include, shingles(2024) furnace(2024) central air-conditioning(2024) hwt(2020). Love the large fully fenced backyard oasis w/stamped concrete patio to lounge at & enjoy beautiful evenings, mature privacy trees, 2 sheds, gas hook-up for bbq and extra fenced-in area w/ plenty of room for a garden. Enjoy the spacious heated, double car garage. Truly, a perfect place to call home for the whole family!

Built in 1978

Essential Information

MLS® #	E4447734
Price	\$424,900
Bedrooms	6
Bathrooms	3.00
Full Baths	3
Square Footage	1,305



Acres	0.00
Year Built	1978
Type	Single Family
Sub-Type	Detached Single Family
Style	4 Level Split
Status	Active

Community Information

Address	133 Plum Crescent
Area	Wetaskiwin
Subdivision	North Centennial
City	Wetaskiwin
County	ALBERTA
Province	AB
Postal Code	T9A 2R9

Amenities

Amenities	Air Conditioner, Crawl Space, Patio, Vinyl Windows
Parking	Double Garage Attached, Heated, Insulated, RV Parking

Interior

Interior Features	ensuite bathroom
Appliances	Air Conditioning-Central, Dishwasher-Built-In, Dryer, Garage Control, Garage Opener, Oven-Microwave, Refrigerator, Storage Shed, Stove-Electric, Washer, Window Coverings, Garage Heater
Heating	Forced Air-1, Natural Gas
Fireplace	Yes
Fireplaces	Corner, Freestanding, Woodstove
Stories	4
Has Basement	Yes
Basement	Full, Finished

Exterior

Exterior	Wood, Metal
Exterior Features	Back Lane, Cul-De-Sac, Fenced, Fruit Trees/Shrubs, Golf Nearby, Landscaped, Playground Nearby, Private Setting, Schools, Treed Lot
Roof	Asphalt Shingles
Construction	Wood, Metal
Foundation	Concrete Perimeter

School Information

Elementary	Centennial
Middle	Sacred Heart
High	WCHS

Additional Information

Date Listed	July 14th, 2025
Days on Market	12
Zoning	Zone 80

DATA IS DEEMED RELIABLE BUT IS NOT GUARANTEED ACCURATE BY THE REALTORS® ASSOCIATION OF EDMONTON. COPYRIGHT 2025 BY THE REALTORS® ASSOCIATION OF EDMONTON. ALL RIGHTS RESERVED.Trademarks are owned or controlled by the Canadian Real Estate Association (CREA) and identify real estate professionals who are members of CREA (REALTOR®, REALTORS®) and/or the quality of services they provide (MLS®, Multiple Listing Service®)

Listing information last updated on July 26th, 2025 at 7:02am MDT