

\$599,900 - 21841 98a Avenue, Edmonton

MLS® #E4446917

\$599,900

3 Bedroom, 2.50 Bathroom, 1,098 sqft

Single Family on 0.00 Acres

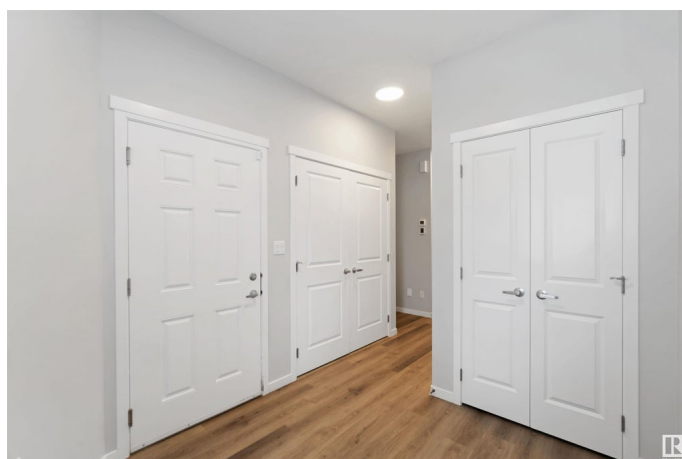
Secord, Edmonton, AB

Welcome to 21841 98A Ave, a beautifully maintained 3 bed, 2.5 bath bungalow in the family-friendly neighbourhood of Secord. Built in 2021, this elegant home features an open-concept main floor with 9-ft ceilings, luxury vinyl plank flooring, and a stylish kitchen with quartz countertops, white tile backsplash, stainless steel appliances, and crisp white cabinetry. The main floor also includes a spacious primary bedroom with 3-pc ensuite and walk-in closet, convenient laundry area, and a 2-pc bath. Downstairs, a fully finished basement offers plush carpeting, a large rec room, two additional bedrooms, 4-pc bath, and ample storage space. Enjoy the outdoors on the large wooden deck, stone patio, fire pit, and beautifully landscaped yard—perfect for entertaining or relaxing. Double attached garage with room for storage. Located near parks, schools, shopping, and quick access to Hwy 16 and Anthony Henday Drive for an easy commute. All this home needs is YOU!

Built in 2021

Essential Information

MLS® #	E4446917
Price	\$599,900
Bedrooms	3
Bathrooms	2.50



Full Baths	2
Half Baths	1
Square Footage	1,098
Acres	0.00
Year Built	2021
Type	Single Family
Sub-Type	Detached Single Family
Style	Bungalow
Status	Active

Community Information

Address	21841 98a Avenue
Area	Edmonton
Subdivision	Secord
City	Edmonton
County	ALBERTA
Province	AB
Postal Code	T5T 7J3

Amenities

Amenities	Ceiling 9 ft., Deck, Detectors Smoke, Fire Pit
Parking Spaces	4
Parking	Double Garage Attached

Interior

Interior Features	ensuite bathroom
Appliances	Dishwasher-Built-In, Dryer, Garage Control, Garage Opener, Hood Fan, Refrigerator, Stove-Electric, Washer, Window Coverings
Heating	Forced Air-1, Natural Gas
Stories	2
Has Basement	Yes
Basement	Full, Finished

Exterior

Exterior	Wood, Stone, Vinyl
Exterior Features	Fenced, Flat Site, Golf Nearby, Landscaped, Level Land, Low Maintenance Landscape, No Back Lane, Playground Nearby, Public Transportation, Schools, Shopping Nearby
Roof	Asphalt Shingles

Construction	Wood, Stone, Vinyl
Foundation	Concrete Perimeter

School Information

Elementary	David Thomas King School
Middle	David Thomas King School
High	Jasper Place School

Additional Information

Date Listed	July 10th, 2025
Days on Market	8
Zoning	Zone 58

DATA IS DEEMED RELIABLE BUT IS NOT GUARANTEED ACCURATE BY THE REALTORS® ASSOCIATION OF EDMONTON. COPYRIGHT 2025 BY THE REALTORS® ASSOCIATION OF EDMONTON. ALL RIGHTS RESERVED.Trademarks are owned or controlled by the Canadian Real Estate Association (CREA) and identify real estate professionals who are members of CREA (REALTOR®, REALTORS®) and/or the quality of services they provide (MLS®, Multiple Listing Service®)

Listing information last updated on July 18th, 2025 at 7:02am MDT