

# \$0 - 202 11830 111 Avenue, Edmonton

MLS® #E4446803

**\$0**

0 Bedroom, 0.00 Bathroom,  
Retail on 0.00 Acres

Prince Rupert, Edmonton, AB

â€¢ Flexible main floor spaces suitable for a variety of professional/medical uses â€¢ Contemporary 2nd floor walk-up office â€¢ Excellent parking with 90Â± dedicated stalls â€¢ Strong Tenant mix featuring established restaurant/pub, medical users and more â€¢ Opportunity for pylon signage and/or exterior signage. â€¢ Great corner location fronting 119 St and 111 Avenue â€¢ Proximity to residential areas of Queen Mary Park, Westmount and Inglewood

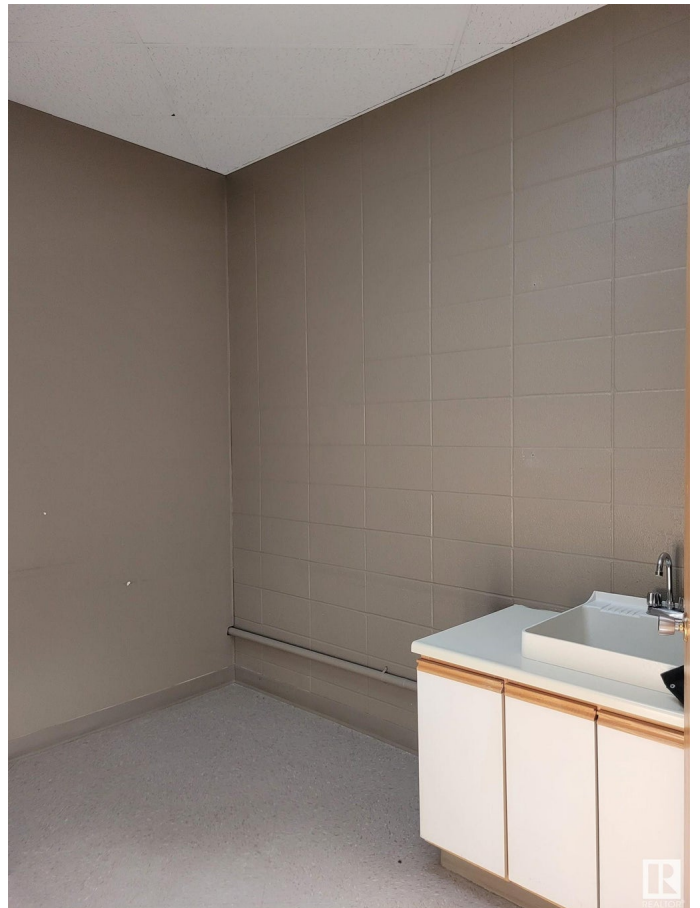
Built in 1977

## Essential Information

|            |          |
|------------|----------|
| MLS® #     | E4446803 |
| Bathrooms  | 0.00     |
| Acres      | 0.00     |
| Year Built | 1977     |
| Type       | Retail   |
| Status     | Active   |

## Community Information

|             |                      |
|-------------|----------------------|
| Address     | 202 11830 111 Avenue |
| Area        | Edmonton             |
| Subdivision | Prince Rupert        |
| City        | Edmonton             |
| County      | ALBERTA              |
| Province    | AB                   |



Postal Code            T5G 0E1

**Exterior**

Exterior                Mixed

Construction          Mixed

**Additional Information**

Date Listed            July 9th, 2025

Days on Market        17

Zoning                  Zone 08

DATA IS DEEMED RELIABLE BUT IS NOT GUARANTEED ACCURATE BY THE REALTORS® ASSOCIATION OF EDMONTON. COPYRIGHT 2025 BY THE REALTORS® ASSOCIATION OF EDMONTON. ALL RIGHTS RESERVED.Trademarks are owned or controlled by the Canadian Real Estate Association (CREA) and identify real estate professionals who are members of CREA (REALTOR®, REALTORS®) and/or the quality of services they provide (MLS®, Multiple Listing Service®)

Listing information last updated on July 26th, 2025 at 7:17am MDT