

\$399,900 - 101 Elm Crescent, Wetaskiwin

MLS® #E4444941

\$399,900

5 Bedroom, 2.00 Bathroom, 1,172 sqft

Single Family on 0.00 Acres

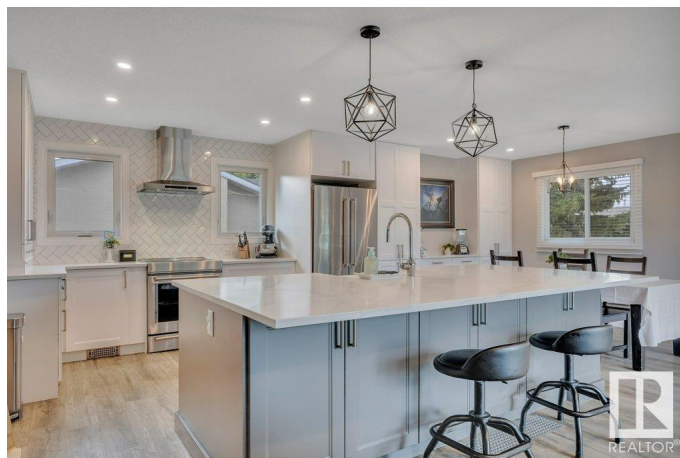
South Centennial, Wetaskiwin, AB

Beautiful Family Home located in the heart of desirable Centennial Subdivision, close to schools & parks! This 5 bedroom, 4-Level Split Home has plenty of room for the whole family, including a newer CUSTOM CHEF™S KITCHEN, beautiful white & grey cabinetry right up to the ceiling, QUARTZ COUNTERTOPS & massive CUSTOM ISLAND with large apron sink & 4 stainless appliances. CENTRAL AIR-CONDITIONING. Vinyl plank flooring through-out, cozy lower family room w/ wood-burning fireplace is a great space for entertaining. Laundry room & sink located on the lower level with tons of storage cabinetry & a work shop. You will love the UNIQUE SUNROOM/BREEZEWAY & huge dbl garage, heated. Backyard is fully fenced with a shed and RV parking.

Built in 1974

Essential Information

MLS® #	E4444941
Price	\$399,900
Bedrooms	5
Bathrooms	2.00
Full Baths	2
Square Footage	1,172
Acres	0.00
Year Built	1974



Type	Single Family
Sub-Type	Detached Single Family
Style	4 Level Split
Status	Active

Community Information

Address	101 Elm Crescent
Area	Wetaskiwin
Subdivision	South Centennial
City	Wetaskiwin
County	ALBERTA
Province	AB
Postal Code	T9A 2C7

Amenities

Amenities	Air Conditioner, Crawl Space, No Animal Home, No Smoking Home, Patio, Vinyl Windows
Parking	Double Garage Attached, Front Drive Access, Heated, Insulated

Interior

Appliances	Air Conditioning-Central, Dishwasher-Built-In, Dryer, Garage Control, Garage Opener, Oven-Microwave, Refrigerator, Stove-Electric, Washer, Window Coverings
Heating	Forced Air-1, Natural Gas
Fireplace	Yes
Fireplaces	Brick Facing, Mantel
Stories	4
Has Basement	Yes
Basement	Full, Finished

Exterior

Exterior	Wood, Brick, Vinyl
Exterior Features	Back Lane, Fenced, Golf Nearby, Landscaped, Paved Lane, Schools, Treed Lot
Roof	Asphalt Shingles
Construction	Wood, Brick, Vinyl
Foundation	Concrete Perimeter

School Information

Elementary	Centennial
------------	------------

Middle	Sacred Heart
High	WCHS

Additional Information

Date Listed	June 27th, 2025
Days on Market	19
Zoning	Zone 80

DATA IS DEEMED RELIABLE BUT IS NOT GUARANTEED ACCURATE BY THE REALTORS® ASSOCIATION OF EDMONTON. COPYRIGHT 2025 BY THE REALTORS® ASSOCIATION OF EDMONTON. ALL RIGHTS RESERVED. Trademarks are owned or controlled by the Canadian Real Estate Association (CREA) and identify real estate professionals who are members of CREA (REALTOR®, REALTORS®) and/or the quality of services they provide (MLS®, Multiple Listing Service®)

Listing information last updated on July 16th, 2025 at 11:33am MDT