

## \$559,648 - 20944 16 Avenue, Edmonton

MLS® #E4444583

**\$559,648**

3 Bedroom, 3.00 Bathroom, 1,753 sqft

Single Family on 0.00 Acres

Stillwater, Edmonton, AB

**BACKING THE GREENSPACE!!!** Welcome to the "Willow" built by the award-winning builder Pacesetter homes and is located in the heart of Stillwater and just steps to the walking trails and parks. As you enter the home you are greeted by luxury vinyl plank flooring throughout the great room, kitchen, and the breakfast nook. Your large kitchen features tile back splash, an island a flush eating bar, quartz counter tops and an undermount sink. Just off of the kitchen and tucked away by the front entry is a 4 piece bath and den. Upstairs is the master's retreat with a large walk in closet and a 4-piece en-suite. The second level also include 2 additional bedrooms with a conveniently placed main 4-piece bathroom and a good sized bonus room. The unspoiled basement has a side separate entrance perfect for a future suite. Close to all amenities and also comes with a side separate entrance perfect for future development.\*\*\* Pictures are of a home with the same layout recently built photos may vary\*\*\* Dec 2025

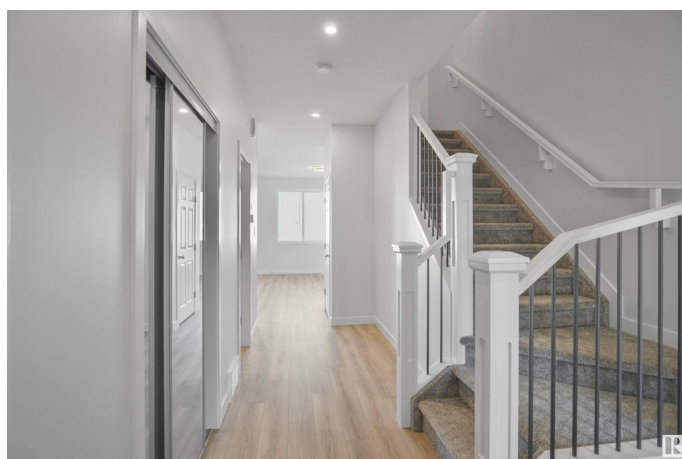
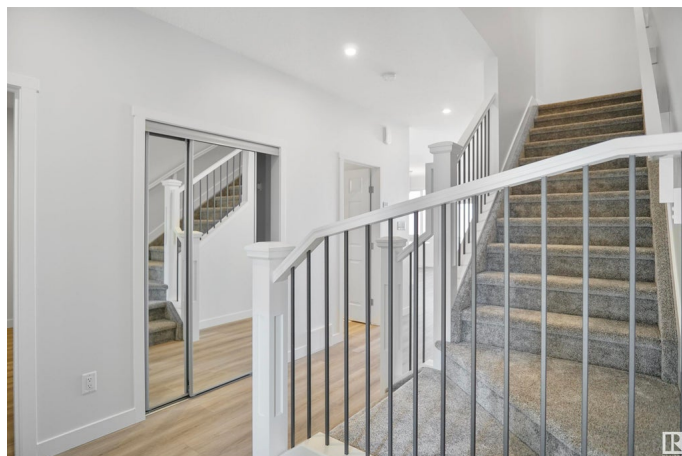
Built in 2025

### Essential Information

MLS® # E4444583

Price \$559,648

Bedrooms 3



|                |                        |
|----------------|------------------------|
| Bathrooms      | 3.00                   |
| Full Baths     | 3                      |
| Square Footage | 1,753                  |
| Acres          | 0.00                   |
| Year Built     | 2025                   |
| Type           | Single Family          |
| Sub-Type       | Detached Single Family |
| Style          | 2 Storey               |
| Status         | Active                 |

### Community Information

|             |                 |
|-------------|-----------------|
| Address     | 20944 16 Avenue |
| Area        | Edmonton        |
| Subdivision | Stillwater      |
| City        | Edmonton        |
| County      | ALBERTA         |
| Province    | AB              |
| Postal Code | T6M 1P9         |

### Amenities

|           |                        |
|-----------|------------------------|
| Amenities | See Remarks            |
| Parking   | Double Garage Attached |

### Interior

|                   |                               |
|-------------------|-------------------------------|
| Interior Features | ensuite bathroom              |
| Appliances        | Garage Control, Garage Opener |
| Heating           | Forced Air-1, Natural Gas     |
| Stories           | 2                             |
| Has Basement      | Yes                           |
| Basement          | Full, Unfinished              |

### Exterior

|                   |  |
|-------------------|--|
| Exterior          | Wood, Stone, Vinyl   |
| Exterior Features | Airport Nearby, Golf Nearby, Park/Reserve, Playground Nearby, Public Swimming Pool, Public Transportation, Schools, Shopping Nearby, See Remarks |
| Roof              | Asphalt Shingles   |
| Construction      | Wood, Stone, Vinyl   |
| Foundation        | Concrete Perimeter   |

**Additional Information**

Date Listed                June 26th, 2025  
Days on Market        24  
Zoning                    Zone 57

DATA IS DEEMED RELIABLE BUT IS NOT GUARANTEED ACCURATE BY THE REALTORS® ASSOCIATION OF EDMONTON. COPYRIGHT 2025 BY THE REALTORS® ASSOCIATION OF EDMONTON. ALL RIGHTS RESERVED.Trademarks are owned or controlled by the Canadian Real Estate Association (CREA) and identify real estate professionals who are members of CREA (REALTOR®, REALTORS®) and/or the quality of services they provide (MLS®, Multiple Listing Service®)  
Listing information last updated on July 19th, 2025 at 10:17pm MDT