

\$1,200,000 - 10432 Jasper Avenue, Edmonton

MLS® #E4444054

\$1,200,000

0 Bedroom, 0.00 Bathroom,

Retail on 0.00 Acres

Downtown (Edmonton), Edmonton, AB

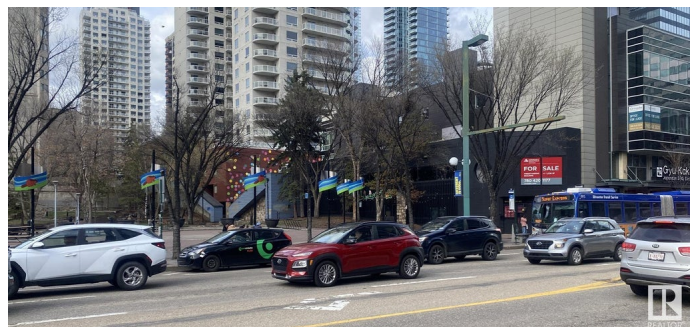
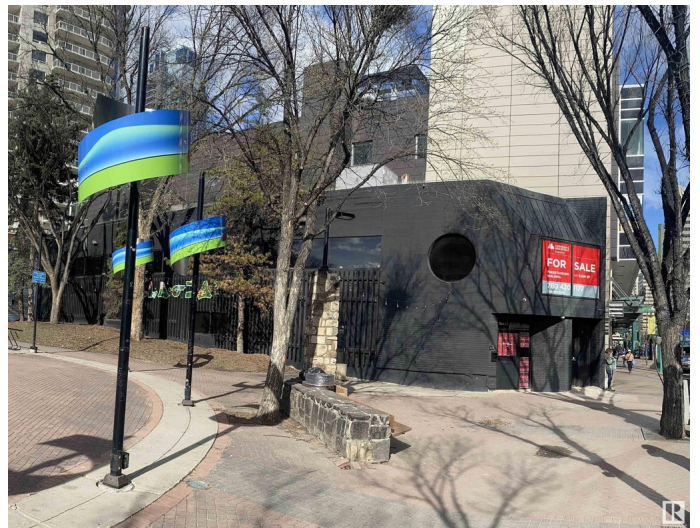
Judicial sale. Rare opportunity to own an extremely unique & desirable character building along Jasper Avenue in Edmonton's downtown core. This two story building is the skinniest commercial building in the city. Most recently the main floor & basement operated as trendy restaurants with the second floor built out as professional offices. Boasting ample natural light & views of Beaver Hills House Park directly adjacent, this is a tremendous opportunity for an owner/user, investor or developer. Located along Jasper Ave & minutes away from Edmonton's Ice District, Roger's Place & 104St. The immediate area is a dense residential node, with an additional 1500+/- apartments to be constructed in the area, which hosts an elegant mixture of restaurants, bars, cafes, retail stores, outdoor markets & summer event programming. Beaver Hills House Park is well underway around 80% complete with completion for this \$10M park estimated to be in 2025. Secure this coveted retail location before someone else does!

Built in 1978

Essential Information

MLS® # E4444054

Price \$1,200,000



Bathrooms	0.00
Acres	0.00
Year Built	1978
Type	Retail
Status	Active

Community Information

Address	10432 Jasper Avenue
Area	Edmonton
Subdivision	Downtown (Edmonton)
City	Edmonton
County	ALBERTA
Province	AB
Postal Code	T5J 1Z3

Exterior

Exterior	Concrete
Construction	Concrete

Additional Information

Date Listed	June 24th, 2025
Days on Market	32
Zoning	Zone 12

DATA IS DEEMED RELIABLE BUT IS NOT GUARANTEED ACCURATE BY THE REALTORS® ASSOCIATION OF EDMONTON. COPYRIGHT 2025 BY THE REALTORS® ASSOCIATION OF EDMONTON. ALL RIGHTS RESERVED. Trademarks are owned or controlled by the Canadian Real Estate Association (CREA) and identify real estate professionals who are members of CREA (REALTOR®, REALTORS®) and/or the quality of services they provide (MLS®, Multiple Listing Service®)

Listing information last updated on July 26th, 2025 at 5:17pm MDT