

Courtesy Of Stevie Lowe Of Real Broker

\$225,000 - 11615 Ellerslie Road, Edmonton

MLS® #E4442324

\$225,000

2 Bedroom, 2.00 Bathroom, 910 sqft

Condo / Townhouse on 0.00 Acres

Rutherford (Edmonton), Edmonton, AB

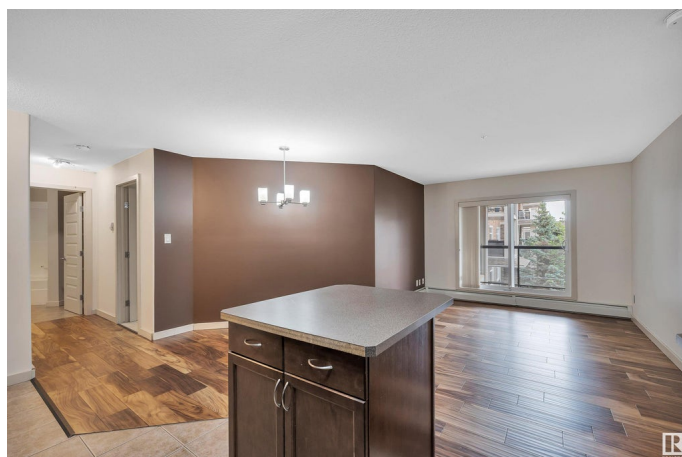
Welcome to unit 316! This beautiful 2-bedroom, 2-bathroom condo features a bright, open layout and new flooring! Enjoy a contemporary kitchen equipped with dark cabinetry, sleek black appliances and a spacious living area. At the end of your day, relax on your spacious balcony, ideal for unwinding. Additional features include: In-suite laundry. Underground titled parking & storage space. Conveniently located near all amenities, including shops, transit, parks, and more!

Built in 2007

Essential Information

MLS® #	E4442324
Price	\$225,000
Bedrooms	2
Bathrooms	2.00
Full Baths	2
Square Footage	910
Acres	0.00
Year Built	2007
Type	Condo / Townhouse
Sub-Type	Lowrise Apartment
Style	Single Level Apartment
Status	Active

Community Information



Address	11615 Ellerslie Road
Area	Edmonton
Subdivision	Rutherford (Edmonton)
City	Edmonton
County	ALBERTA
Province	AB
Postal Code	T6W 0J3

Amenities

Amenities	Detectors Smoke, Exercise Room, Guest Suite, Intercom, Parking-Visitor, Social Rooms, Storage Cage
Parking	Heated, Underground

Interior

Interior Features	ensuite bathroom
Appliances	Dishwasher-Built-In, Dryer, Microwave Hood Fan, Refrigerator, Stove-Electric, Washer, Window Coverings
Heating	Baseboard, Natural Gas
# of Stories	4
Stories	4
Has Basement	Yes
Basement	None, No Basement

Exterior

Exterior	Wood, Stone, Vinyl
Exterior Features	Flat Site, Landscaped, Public Transportation, Shopping Nearby
Roof	Asphalt Shingles
Construction	Wood, Stone, Vinyl
Foundation	Concrete Perimeter

Additional Information

Date Listed	June 13th, 2025
Days on Market	1
Zoning	Zone 55
Condo Fee	\$584

DATA IS DEEMED RELIABLE BUT IS NOT GUARANTEED ACCURATE BY THE REALTORS® ASSOCIATION OF EDMONTON. COPYRIGHT 2025 BY THE REALTORS® ASSOCIATION OF EDMONTON. ALL RIGHTS RESERVED. Trademarks are owned or controlled by the Canadian Real Estate Association (CREA) and identify real estate professionals who are members of CREA (REALTOR®, REALTORS®) and/or the quality of services they provide (MLS®, Multiple Listing Service®)

Listing information last updated on June 14th, 2025 at 7:32pm MDT