

\$459,988 - 1813 Keene Crescent, Edmonton

MLS® #E4442273

\$459,988

3 Bedroom, 2.50 Bathroom, 1,579 sqft

Single Family on 0.00 Acres

Keswick Area, Edmonton, AB

This modern and meticulously maintained home offers 1579 square feet of stylish, open-concept living space along with a double attached garage. Thoughtful upgrades such as A/C, a water softener, and an EV outlet add convenience and comfort. The main floor features a dream kitchen, equipped with stainless steel appliances, quartz countertops, and custom pull-out drawers—perfect for cooking and entertaining. The bright living and dining areas boast large windows that fill the space with natural light and offer views of the west-facing backyard, which is fully fenced and beautifully landscaped. Upstairs, you’ll find two spacious guest bedrooms, a 4-piece bathroom, a dedicated laundry room, and a generously sized primary suite with a walk-in closet and a 4-piece ensuite. The full-sized basement is undeveloped and includes a bathroom rough-in, waiting for your touch. Ideally located within walking distance to a new shopping centre, public transit, and a school, this home has it all!

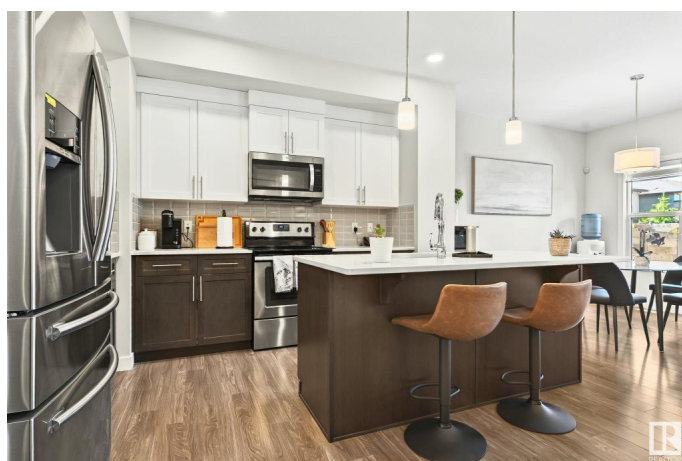
Built in 2018

Essential Information

MLS® # E4442273

Price \$459,988

Bedrooms 3



Bathrooms	2.50
Full Baths	2
Half Baths	1
Square Footage	1,579
Acres	0.00
Year Built	2018
Type	Single Family
Sub-Type	Residential Attached
Style	2 Storey
Status	Active

Community Information

Address	1813 Keene Crescent
Area	Edmonton
Subdivision	Keswick Area
City	Edmonton
County	ALBERTA
Province	AB
Postal Code	T6W 3J8

Amenities

Amenities	Air Conditioner, Ceiling 9 ft., Detectors Smoke, Secured Parking
Parking Spaces	4
Parking	Double Garage Attached

Interior

Interior Features	ensuite bathroom
Appliances	Air Conditioning-Central, Dishwasher-Built-In, Dryer, Garage Control, Garage Opener, Microwave Hood Fan, Refrigerator, Storage Shed, Stove-Electric, Washer, Water Softener, Window Coverings
Heating	Forced Air-1, Natural Gas
Stories	2
Has Basement	Yes
Basement	Full, Unfinished

Exterior

Exterior	Concrete, Brick, Vinyl
Exterior Features	Airport Nearby, Golf Nearby, Landscaped, Playground Nearby, Public Transportation, Schools, Shopping Nearby

Roof	Asphalt Shingles
Construction	Concrete, Brick, Vinyl
Foundation	Concrete Perimeter

Additional Information

Date Listed	June 13th, 2025
Days on Market	1
Zoning	Zone 56

DATA IS DEEMED RELIABLE BUT IS NOT GUARANTEED ACCURATE BY THE REALTORS® ASSOCIATION OF EDMONTON. COPYRIGHT 2025 BY THE REALTORS® ASSOCIATION OF EDMONTON. ALL RIGHTS RESERVED.Trademarks are owned or controlled by the Canadian Real Estate Association (CREA) and identify real estate professionals who are members of CREA (REALTOR®, REALTORS®) and/or the quality of services they provide (MLS®, Multiple Listing Service®)

Listing information last updated on June 14th, 2025 at 7:02pm MDT