

## \$455,000 - 5407 15 Avenue, Edmonton

MLS® #E4441826

**\$455,000**

3 Bedroom, 3.50 Bathroom, 1,502 sqft

Single Family on 0.00 Acres

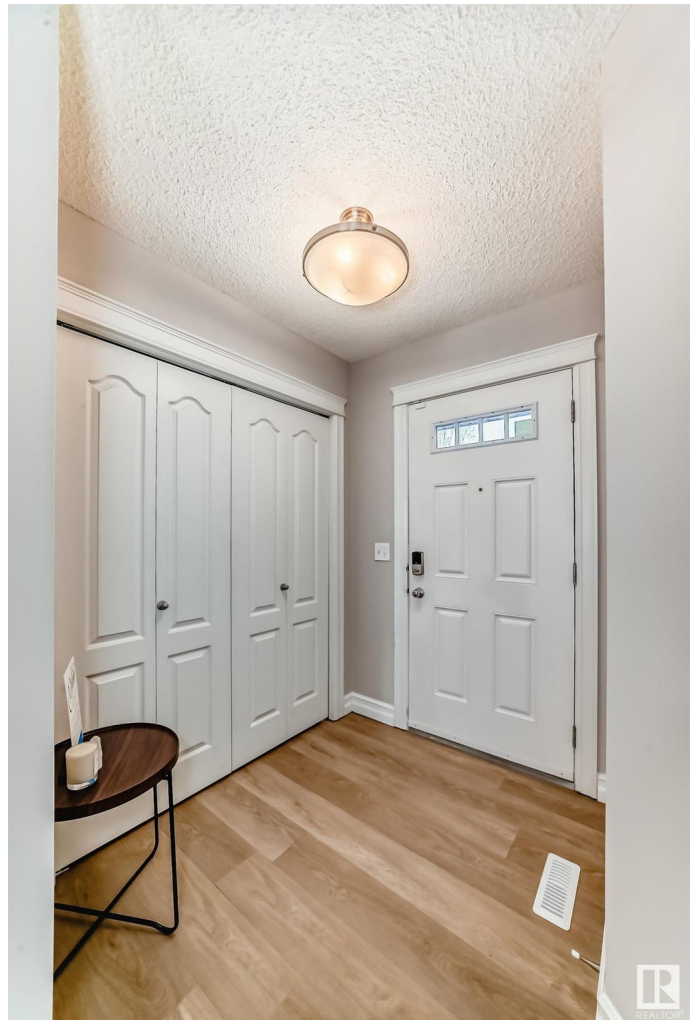
Walker, Edmonton, AB

Gorgeous half duplex in Walker! With over 2,100 sq ft of living space, this cozy home has fresh paint, brick feature walls and brand new flooring from top to bottom. Photos show layout; upper floor and basement have new carpet. The centrally located kitchen includes a gas stove, eating bar & massive pantry. The dining room features built-in shelving with a bench. The cozy living room has a brick feature wall and an electric fireplace. The upper floor has a spacious primary bedroom with a walk-in closet & 4 piece ensuite. There are also two more bedrooms, a shared 4 piece bathroom & laundry. The fully finished basement has a spacious family room and another 4 piece bathroom. Completing this home is a single attached garage and a large backyard. With access to all the amenities, parks and schools, this location cannot be beat!

Built in 2012

### Essential Information

MLS® #	E4441826
Price	\$455,000
Bedrooms	3
Bathrooms	3.50
Full Baths	3
Half Baths	1



Square Footage	1,502
Acres	0.00
Year Built	2012
Type	Single Family
Sub-Type	Half Duplex
Style	2 Storey
Status	Active

### Community Information

Address	5407 15 Avenue
Area	Edmonton
Subdivision	Walker
City	Edmonton
County	ALBERTA
Province	AB
Postal Code	T6X 1R5

### Amenities

Amenities	Air Conditioner, Closet Organizers, Deck, Fire Pit, Front Porch, No Animal Home, No Smoking Home
Parking	Single Garage Attached

### Interior

Interior Features	ensuite bathroom
Appliances	Air Conditioning-Central, Dishwasher-Built-In, Dryer, Garage Control, Garage Opener, Microwave Hood Fan, Refrigerator, Stove-Gas, Washer
Heating	Forced Air-1, Natural Gas
Fireplace	Yes
Fireplaces	Insert
Stories	3
Has Basement	Yes
Basement	Full, Finished

### Exterior

Exterior	Wood, Vinyl
Exterior Features	Back Lane, Fenced, Landscaped, Paved Lane, Playground Nearby, Public Transportation, Schools, Shopping Nearby
Roof	Asphalt Shingles
Construction	Wood, Vinyl

Foundation                      Concrete Perimeter

**Additional Information**

Date Listed                      June 11th, 2025  
Days on Market                16  
Zoning                              Zone 53



DATA IS DEEMED RELIABLE BUT IS NOT GUARANTEED ACCURATE BY THE REALTORS® ASSOCIATION OF EDMONTON. COPYRIGHT 2025 BY THE REALTORS® ASSOCIATION OF EDMONTON. ALL RIGHTS RESERVED.Trademarks are owned or controlled by the Canadian Real Estate Association (CREA) and identify real estate professionals who are members of CREA (REALTOR®, REALTORS®) and/or the quality of services they provide (MLS®, Multiple Listing Service®)  
Listing information last updated on June 27th, 2025 at 1:02am MDT