

\$690,000 - 21941 94a Avenue, Edmonton

MLS® #E4441499

\$690,000

4 Bedroom, 3.50 Bathroom, 2,373 sqft

Single Family on 0.00 Acres

Secord, Edmonton, AB

Welcome to this stunning 2-storey home in Secord, backing a park and loaded with upgrades. The open-concept main floor features a bright living room with a fireplace, a spacious dining area with large windows, and a gourmet kitchen with stainless steel appliances, a pantry, ample storage, and a large island with a breakfast bar. Enjoy automated blinds, upgraded lighting, and main floor laundry with a 2pc bath. Upstairs offers two bedrooms, a 4pc bath, a generous bonus room, and a luxurious primary suite with his & hers walk-in closets and a 5pc ensuite featuring dual sinks, a soaker tub, and a stand-up shower. The fully finished basement includes a large rec room with a wet bar, a bedroom, and a 3pc bath. Stay cool inside with A/C and entertain outside in the beautifully landscaped, fully fenced yard with a new composite deck, stamped concrete patio, privacy trees, and Gem Lights. Steps to schools, transit, golf, and amenities—this home has it all!

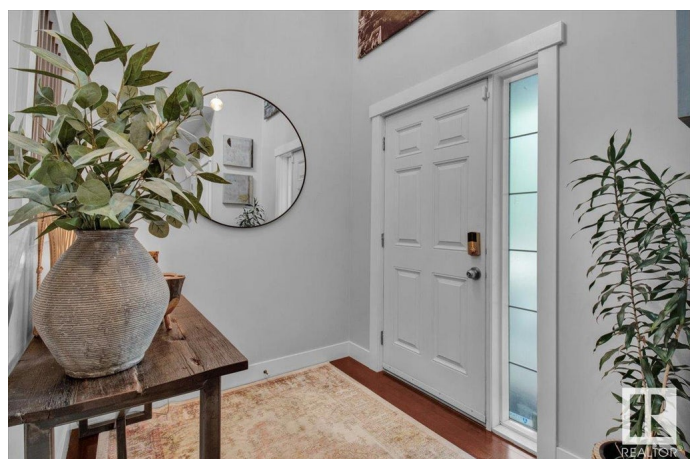
Built in 2009

Essential Information

MLS® # E4441499

Price \$690,000

Bedrooms 4



Bathrooms	3.50
Full Baths	3
Half Baths	1
Square Footage	2,373
Acres	0.00
Year Built	2009
Type	Single Family
Sub-Type	Detached Single Family
Style	2 Storey
Status	Active

Community Information

Address	21941 94a Avenue
Area	Edmonton
Subdivision	Secord
City	Edmonton
County	ALBERTA
Province	AB
Postal Code	T5T 1N1

Amenities

Amenities	Deck, Patio, Vinyl Windows, Wet Bar
Parking	Double Garage Attached

Interior

Interior Features	ensuite bathroom
Appliances	Air Conditioning-Central, Dishwasher-Built-In, Dryer, Garburator, Microwave Hood Fan, Refrigerator, Stove-Electric, Washer
Heating	Forced Air-1, Natural Gas
Fireplace	Yes
Fireplaces	Insert
Stories	3
Has Basement	Yes
Basement	Full, Finished

Exterior

Exterior	Wood, Stone, Vinyl
Exterior Features	Backs Onto Park/Trees, Fenced, Flat Site, Golf Nearby, Landscaped, Low Maintenance Landscape, Park/Reserve, Playground Nearby, Public

	Transportation, Schools, Shopping Nearby
Roof	Asphalt Shingles
Construction	Wood, Stone, Vinyl
Foundation	Concrete Perimeter

Additional Information

Date Listed	June 10th, 2025
Days on Market	5
Zoning	Zone 58

DATA IS DEEMED RELIABLE BUT IS NOT GUARANTEED ACCURATE BY THE REALTORS® ASSOCIATION OF EDMONTON. COPYRIGHT 2025 BY THE REALTORS® ASSOCIATION OF EDMONTON. ALL RIGHTS RESERVED. Trademarks are owned or controlled by the Canadian Real Estate Association (CREA) and identify real estate professionals who are members of CREA (REALTOR®, REALTORS®) and/or the quality of services they provide (MLS®, Multiple Listing Service®)

Listing information last updated on June 15th, 2025 at 5:47am MDT