

\$429,900 - 5608 190a Street, Edmonton

MLS® #E4441292

\$429,900

4 Bedroom, 3.00 Bathroom, 1,316 sqft

Single Family on 0.00 Acres

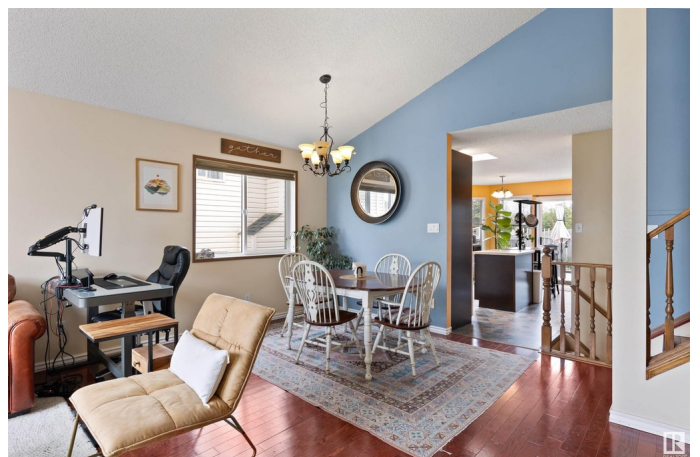
Jamieson Place, Edmonton, AB

CHARMING & COZY! This 4 level split in Jamieson Place is a perfect family home! Offering 4 bedrooms & 3 full bathrooms over 2000sqft of living space! Main floor features **HARDWOOD** floors, spacious living and dining w/ **VAULTED CEILINGS & HUGE WINDOWS!** Upgraded kitchen w/ sunny skylight & loads of cupboards & counter space. Upper level has 3 spacious bedrooms incl. primary w/ **FULL ENSUITE**. Lower level family room w/ **WOOD BURNING** fireplace & large window is the perfect place to relax! 4th bedroom, laundry & 3rd bath complete this level. Basement has loads of storage and REC room perfect for gym or hobbies! **RECENT UPGRADES** incl: **AIR CONDITIONING**, Furnace, deck & Roof (2024). Backyard w/ privacy backing on to storm pond! **WALKING DISTANCE** to schools, mins to Henday, shopping & all amenities. **GREAT VALUE!**

Built in 1992

Essential Information

MLS® #	E4441292
Price	\$429,900
Bedrooms	4
Bathrooms	3.00
Full Baths	3
Square Footage	1,316



Acres	0.00
Year Built	1992
Type	Single Family
Sub-Type	Detached Single Family
Style	4 Level Split
Status	Active

Community Information

Address	5608 190a Street
Area	Edmonton
Subdivision	Jamieson Place
City	Edmonton
County	ALBERTA
Province	AB
Postal Code	T6M 2L3

Amenities

Amenities	Air Conditioner, Deck, No Smoking Home
Parking Spaces	4
Parking	Double Garage Attached

Interior

Interior Features	ensuite bathroom
Appliances	Dishwasher-Built-In, Dryer, Hood Fan, Refrigerator, Stove-Electric, Washer, Window Coverings
Heating	Forced Air-1, Natural Gas
Fireplace	Yes
Fireplaces	Brick Facing
Stories	4
Has Basement	Yes
Basement	Full, Partially Finished

Exterior

Exterior	Wood, Vinyl
Exterior Features	Backs Onto Park/Trees, Fenced, Golf Nearby, Landscaped, No Back Lane, Park/Reserve, Playground Nearby, Public Transportation, Schools, Shopping Nearby
Roof	Asphalt Shingles
Construction	Wood, Vinyl

Foundation Concrete Perimeter

School Information

Elementary Michael A. Kostek
Middle S. Bruce Smith
High Jasper Place

Additional Information

Date Listed June 9th, 2025
Days on Market 7
Zoning Zone 20

DATA IS DEEMED RELIABLE BUT IS NOT GUARANTEED ACCURATE BY THE REALTORS® ASSOCIATION OF EDMONTON. COPYRIGHT 2025 BY THE REALTORS® ASSOCIATION OF EDMONTON. ALL RIGHTS RESERVED.Trademarks are owned or controlled by the Canadian Real Estate Association (CREA) and identify real estate professionals who are members of CREA (REALTOR®, REALTORS®) and/or the quality of services they provide (MLS®, Multiple Listing Service®)
Listing information last updated on June 15th, 2025 at 11:02pm MDT