

# \$615,000 - 8715 10 Avenue, Edmonton

MLS® #E4440720

**\$615,000**

4 Bedroom, 3.50 Bathroom, 1,883 sqft  
Single Family on 0.00 Acres

Summerside, Edmonton, AB

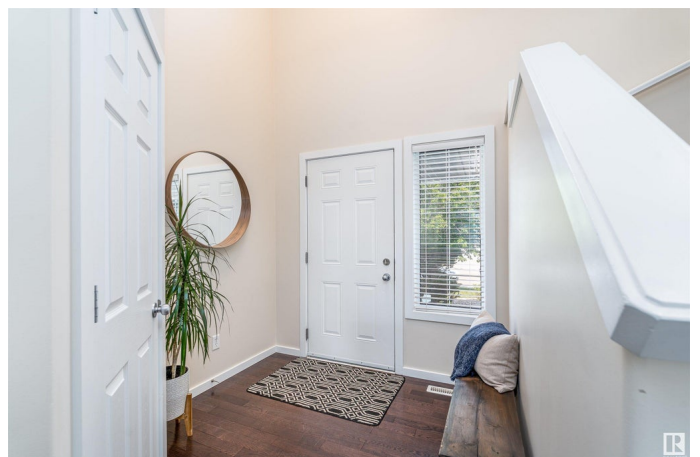
Live the Dream in Summerside! This impressive and spacious two-storey gem with a double attached garage is nestled in the prestigious Summerside community! Gleaming hardwood floors flow through the sunlit dining room and cozy living room with a corner fireplace. The chef's dream kitchen features a central island with breakfast bar, walk-in corner pantry, and stainless steel appliances. Upstairs boasts a stunning primary suite with walk-in closet and a 4-piece ensuite with soaker tub and walk-in shower, plus 2 additional bedrooms, a 4-piece bathroom, and a massive family room. The fully finished basement offers a spacious bonus room, an extra bedroom, and full bath, ideal for guests overnight staying. Step outside to a large deck and beautifully landscaped yard, perfect for entertaining or relaxing. Located in a quiet, convenient area near shopping, transit, schools, and offering exclusive access to Summerside Lake and all its amazing amenities. This is the lifestyle you've been waiting for!

Built in 2005

## Essential Information

MLS® # E4440720

Price \$615,000



Bedrooms	4
Bathrooms	3.50
Full Baths	3
Half Baths	1
Square Footage	1,883
Acres	0.00
Year Built	2005
Type	Single Family
Sub-Type	Detached Single Family
Style	2 Storey
Status	Active

### **Community Information**

Address	8715 10 Avenue
Area	Edmonton
Subdivision	Summerside
City	Edmonton
County	ALBERTA
Province	AB
Postal Code	T6X 1J6

### **Amenities**

Amenities	Deck
Parking	Double Garage Attached

### **Interior**

Interior Features	ensuite bathroom
Appliances	Dishwasher-Built-In, Dryer, Garage Control, Garage Opener, Oven-Microwave, Refrigerator, Storage Shed, Stove-Electric, Washer, Window Coverings
Heating	Forced Air-1, Natural Gas
Fireplace	Yes
Fireplaces	Corner
Stories	3
Has Basement	Yes
Basement	Full, Finished

### **Exterior**

Exterior	Wood, Vinyl
----------	-------------

Exterior Features	Fenced, Lake Access Property, Playground Nearby, Private Setting, Public Transportation, Recreation Use, Schools, Shopping Nearby, Stream/Pond
Roof	Asphalt Shingles
Construction	Wood, Vinyl
Foundation	Concrete Perimeter

### **Additional Information**

Date Listed	June 5th, 2025
Days on Market	10
Zoning	Zone 53
HOA Fees	453.02
HOA Fees Freq.	Annually

DATA IS DEEMED RELIABLE BUT IS NOT GUARANTEED ACCURATE BY THE REALTORS® ASSOCIATION OF EDMONTON. COPYRIGHT 2025 BY THE REALTORS® ASSOCIATION OF EDMONTON. ALL RIGHTS RESERVED. Trademarks are owned or controlled by the Canadian Real Estate Association (CREA) and identify real estate professionals who are members of CREA (REALTOR®, REALTORS®) and/or the quality of services they provide (MLS®, Multiple Listing Service®)

Listing information last updated on June 15th, 2025 at 2:02pm MDT