

\$149,900 - 301 2908 105a Street, Edmonton

MLS® #E4439411

\$149,900

2 Bedroom, 1.50 Bathroom, 1,024 sqft

Condo / Townhouse on 0.00 Acres

Ermineskin, Edmonton, AB

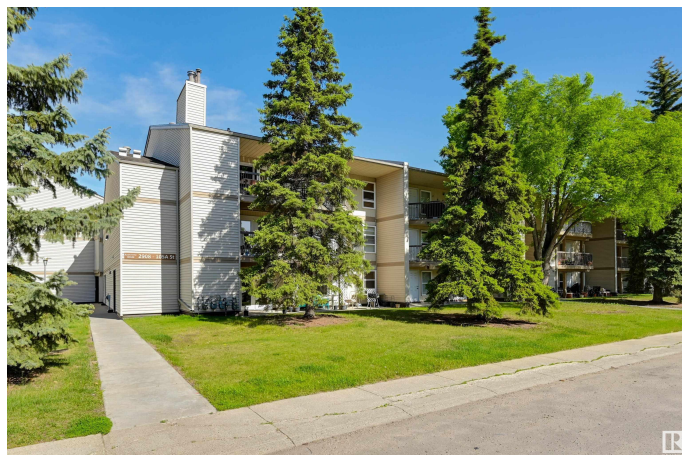
TOP FLOOR spacious 2 bedroom, 1.5 bathroom condo with a huge 170 sq.ft. east-facing covered balcony! Over 1,000 sq.ft. of interior space featuring beautiful solid hardwood flooring and high-end bathroom renovations. The living room offers a cozy brick-facing wood-burning fireplace, balcony access, and is adjacent to the dedicated dining area. The kitchen features wood cabinets, new stainless steel dishwasher, and a passthrough window to the dining room. Both bedrooms are generously sized. The primary has direct balcony access, a walk-through closet, and an ensuite. The large covered balcony offers serene, treelined views and space for a full dining set and lounge area. Lots of storage and a convenient energized parking stall. Located in a quiet, convenient neighborhood close to all amenities, South Common, major roadways, and public transit—including an LRT station just a 10-minute walk away and a bus stop right across the street. This well-cared-for home is a fantastic value and a great place to live!

Built in 1978

Essential Information

MLS® # E4439411

Price \$149,900



Bedrooms	2
Bathrooms	1.50
Full Baths	1
Half Baths	1
Square Footage	1,024
Acres	0.00
Year Built	1978
Type	Condo / Townhouse
Sub-Type	Lowrise Apartment
Style	Single Level Apartment
Status	Active

Community Information

Address	301 2908 105a Street
Area	Edmonton
Subdivision	Ermineskin
City	Edmonton
County	ALBERTA
Province	AB
Postal Code	T6H 3K2

Amenities

Amenities	Intercom, Parking-Visitor, Patio, Storage-In-Suite, Storage-Locker Room
Parking Spaces	1
Parking	Stall

Interior

Interior Features	ensuite bathroom
Appliances	Dishwasher-Built-In, Refrigerator, Stove-Electric, Window Coverings
Heating	Forced Air-1, Natural Gas
Fireplace	Yes
Fireplaces	Brick Facing
# of Stories	3
Stories	1
Has Basement	Yes
Basement	None, No Basement

Exterior

Exterior	Wood, Vinyl
----------	-------------

Exterior Features	Playground Nearby, Public Transportation, Schools, Shopping Nearby
Roof	Asphalt Shingles
Construction	Wood, Vinyl
Foundation	Concrete Perimeter

Additional Information

Date Listed	May 30th, 2025
Days on Market	27
Zoning	Zone 16
Condo Fee	\$512

DATA IS DEEMED RELIABLE BUT IS NOT GUARANTEED ACCURATE BY THE REALTORS® ASSOCIATION OF EDMONTON. COPYRIGHT 2025 BY THE REALTORS® ASSOCIATION OF EDMONTON. ALL RIGHTS RESERVED.Trademarks are owned or controlled by the Canadian Real Estate Association (CREA) and identify real estate professionals who are members of CREA (REALTOR®, REALTORS®) and/or the quality of services they provide (MLS®, Multiple Listing Service®)

Listing information last updated on June 26th, 2025 at 12:47am MDT