

# \$92,000 - 9028 Jasper Avenue, Edmonton

MLS® #E4439222

**\$92,000**

1 Bedroom, 1.00 Bathroom, 669 sqft  
Condo / Townhouse on 0.00 Acres

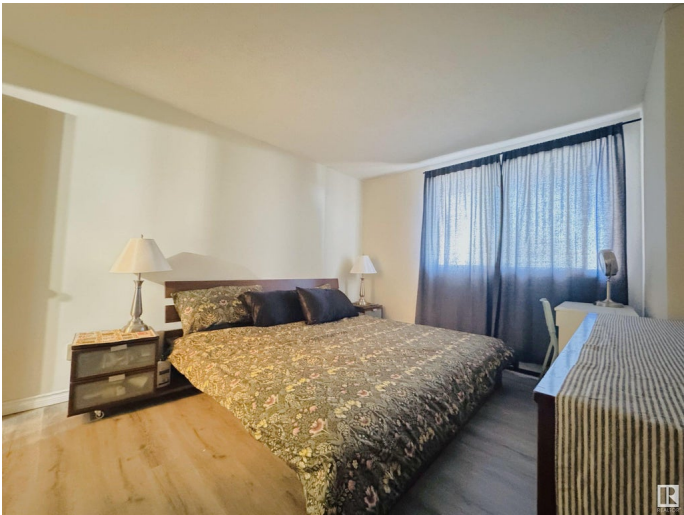
Boyle Street, Edmonton, AB

Prime Downtown Location! This bright and spacious 1-bedroom, 1-bath condo offers incredible value with recently updated flooring and sweeping River Valley views. Perfect for first-time buyers, students, professionals, or investors. Enjoy peace of mind with all utilities included “ heat, water, and electricity “ plus the bonus of underground parking and a secure storage space. Steps from the Ice District, LRT, shopping, dining, nightlife, and River Valley trails. A fantastic opportunity in one of Edmonton’s most desirable central communities.

Built in 1971

## Essential Information

MLS® #	E4439222
Price	\$92,000
Bedrooms	1
Bathrooms	1.00
Full Baths	1
Square Footage	669
Acres	0.00
Year Built	1971
Type	Condo / Townhouse
Sub-Type	Apartment High Rise
Style	Multi Level Apartment
Status	Active



## Community Information

Address	9028 Jasper Avenue
Area	Edmonton
Subdivision	Boyle Street
City	Edmonton
County	ALBERTA
Province	AB
Postal Code	T5H 3Y6

## Amenities

Amenities	See Remarks
Parking	Underground

## Interior

Appliances	Refrigerator, Stove-Electric
Heating	Baseboard, Electric
# of Stories	11
Stories	1
Has Basement	Yes
Basement	None, No Basement

## Exterior

Exterior	Concrete
Exterior Features	River View, Schools, Shopping Nearby, View Downtown
Roof	Tar & Gravel
Construction	Concrete
Foundation	Concrete Perimeter

## Additional Information

Date Listed	May 29th, 2025
Days on Market	16
Zoning	Zone 13
Condo Fee	\$642

DATA IS DEEMED RELIABLE BUT IS NOT GUARANTEED ACCURATE BY THE REALTORS® ASSOCIATION OF EDMONTON. COPYRIGHT 2025 BY THE REALTORS® ASSOCIATION OF EDMONTON. ALL RIGHTS RESERVED. Trademarks are owned or controlled by the Canadian Real Estate Association (CREA) and identify real estate professionals who are members of CREA (REALTOR®, REALTORS®) and/or the quality of services they provide (MLS®, Multiple Listing Service®)

Listing information last updated on June 14th, 2025 at 7:47pm MDT