

\$375,000 - 6301 20 St, Rural Leduc County

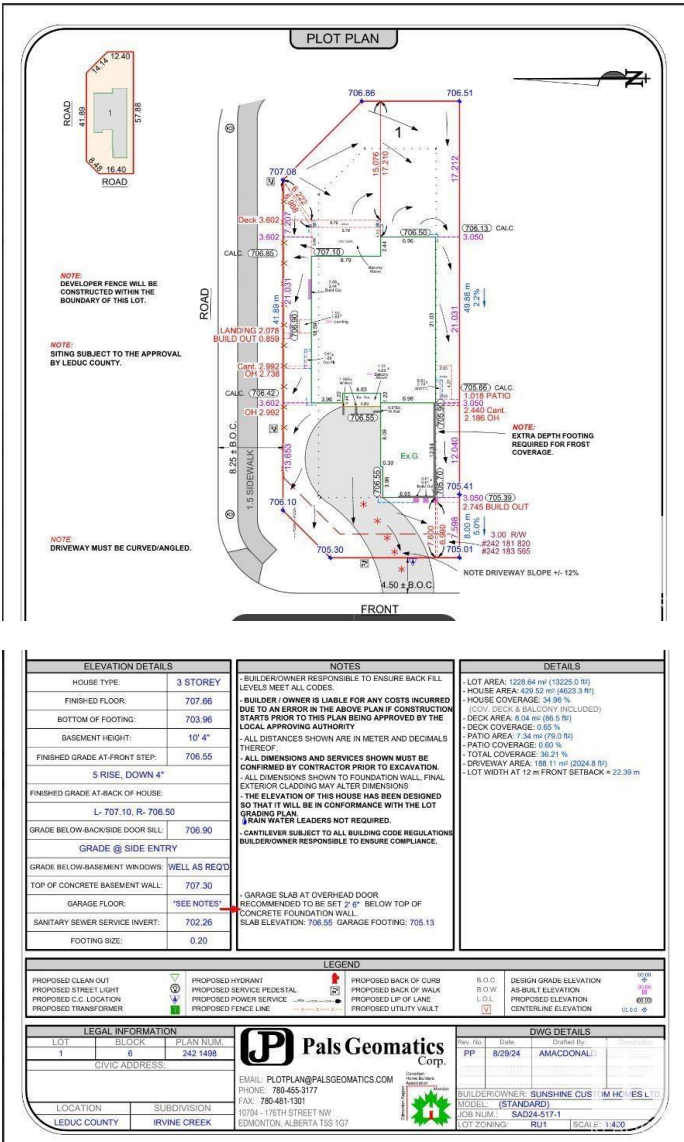
MLS® #E4438875

\$375,000

0 Bedroom, 0.00 Bathroom,  
Rural on 0.30 Acres

Irvine Creek, Rural Leduc County, AB

Build your forever home in the sought-after community of Irvine Creek! This exceptional 1,228 sq. m. lot with a 52' pocket offers ample space to design a custom residence tailored to your lifestyle. Ideally located just minutes from South Edmonton, Beaumont, Leduc, and Nisku, this lot provides convenient access to a wide range of amenities, including the Edmonton International Airport, Premium Outlet Collection, South Edmonton Common, shopping, dining, and entertainment. Enjoy nearby walking trails and a beautifully landscaped park – perfect for outdoor enthusiasts and families alike. An excellent opportunity to invest in a growing, well-connected neighborhood.



Essential Information

MLS® #	E4438875
Price	\$375,000
Bathrooms	0.00
Acres	0.30
Type	Rural
Sub-Type	Vacant Lot/Land
Status	Active

Community Information

Address	6301 20 St
---------	------------



Area	Rural Leduc County
Subdivision	Irvine Creek
City	Rural Leduc County
County	ALBERTA
Province	AB
Postal Code	T4X 3C9

## Exterior

Exterior Features    Airport Nearby, Corner Lot, Shopping Nearby

## Additional Information

Date Listed	May 28th, 2025
Days on Market	15
Zoning	Zone 80

DATA IS DEEMED RELIABLE BUT IS NOT GUARANTEED ACCURATE BY THE REALTORS® ASSOCIATION OF EDMONTON. COPYRIGHT 2025 BY THE REALTORS® ASSOCIATION OF EDMONTON. ALL RIGHTS RESERVED. Trademarks are owned or controlled by the Canadian Real Estate Association (CREA) and identify real estate professionals who are members of CREA (REALTOR®, REALTORS®) and/or the quality of services they provide (MLS®, Multiple Listing Service®)

Listing information last updated on June 12th, 2025 at 2:02am MDT