

## **\$384,900 - 27-2710 66 Street, Edmonton**

---

MLS® #E4436974

### **\$384,900**

3 Bedroom, 2.50 Bathroom, 1,240 sqft

Condo / Townhouse on 0.00 Acres

The Orchards At Ellerslie, Edmonton, AB

Modern beautiful 3 bedroom, 3 bathroom home with Double attached garage in the heart of the Orchards area. Upon entering you will be greeted with 9' ceilings and LED lighting. The Kitchen is large with breakfast eating bar and Quartz counter. The stainless steel appliances are pleasure to cook with. Lots of counter space to prepare meals and enjoy. Flowing from the kitchen is the spacious living room with large windows. Followed by the dining area which you can access the deck from. Main floor powder room is great for guests. Upstairs you will find an excellent layout for the family. There is a massive master bedroom sanctuary with walk-in closet and large 4pc ensuite bathroom. Servicing the other 2 bedrooms is a 4pc full bathroom. The bedrooms are conveniently separated from the master by the large laundry room and bathroom. The open basement awaits your ideas and has legal sized window for future bedroom, roughed-in bathroom. All appliances are included in this family home just turn the key and enjoy.

Built in 2025

### **Essential Information**

MLS® #                      E4436974

Price                         \$384,900



Bedrooms	3
Bathrooms	2.50
Full Baths	2
Half Baths	1
Square Footage	1,240
Acres	0.00
Year Built	2025
Type	Condo / Townhouse
Sub-Type	Townhouse
Style	2 Storey
Status	Active

### Community Information

Address	27-2710 66 Street
Area	Edmonton
Subdivision	The Orchards At Ellerslie
City	Edmonton
County	ALBERTA
Province	AB
Postal Code	T6X 3H4

### Amenities

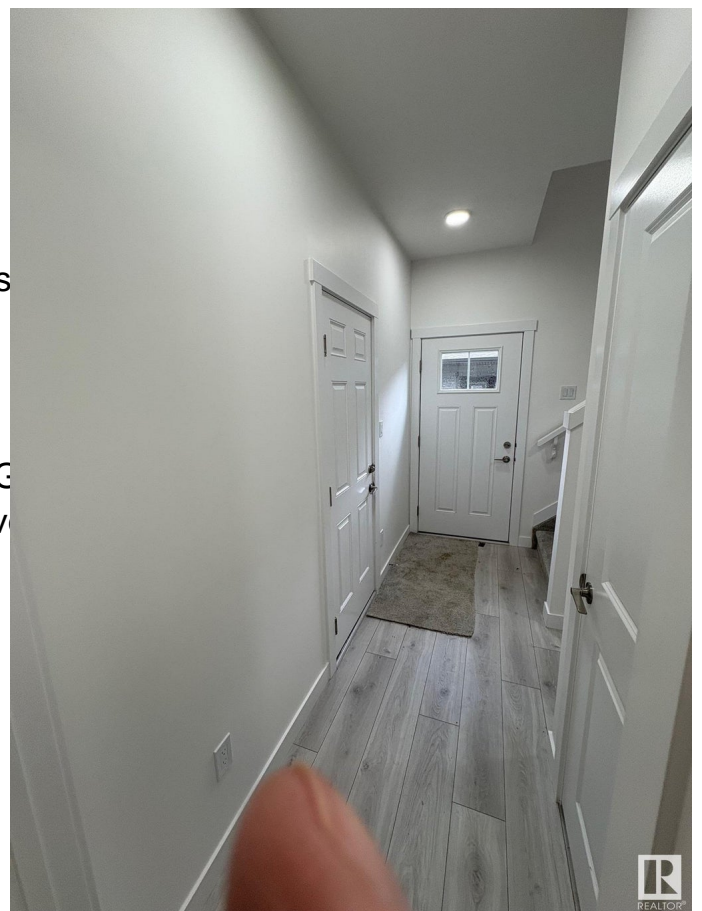
Amenities	Deck
Parking	Double Garage Attached, Ins

### Interior

Interior Features	ensuite bathroom
Appliances	Dishwasher-Built-In, Dryer, G Hood Fan, Refrigerator, Stov
Heating	Forced Air-1, Natural Gas
Stories	2
Has Basement	Yes
Basement	Full, Unfinished

### Exterior

Exterior	Wood, Vinyl
Exterior Features	Flat Site, Golf Nearby, Landscaped, Public Transportation, Schools, Shopping Nearby
Roof	Asphalt Shingles



Construction	Wood, Vinyl
Foundation	Concrete Perimeter

**Additional Information**

Date Listed	May 16th, 2025
Days on Market	21
Zoning	Zone 53
HOA Fees	450
HOA Fees Freq.	Annually
Condo Fee	\$152

DATA IS DEEMED RELIABLE BUT IS NOT GUARANTEED ACCURATE BY THE REALTORS® ASSOCIATION OF EDMONTON. COPYRIGHT 2025 BY THE REALTORS® ASSOCIATION OF EDMONTON. ALL RIGHTS RESERVED.Trademarks are owned or controlled by the Canadian Real Estate Association (CREA) and identify real estate professionals who are members of CREA (REALTOR®, REALTORS®) and/or the quality of services they provide (MLS®, Multiple Listing Service®)

Listing information last updated on June 6th, 2025 at 3:47am MDT