

\$450,000 - 7212 138 Avenue, Edmonton

MLS® #E4432735

\$450,000

4 Bedroom, 2.00 Bathroom, 1,064 sqft

Single Family on 0.00 Acres

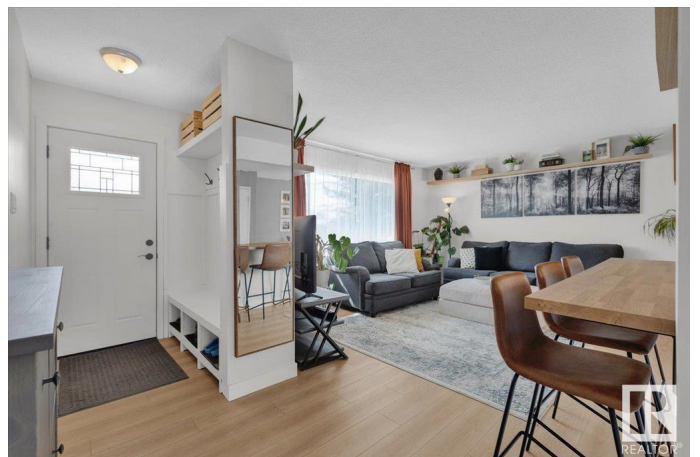
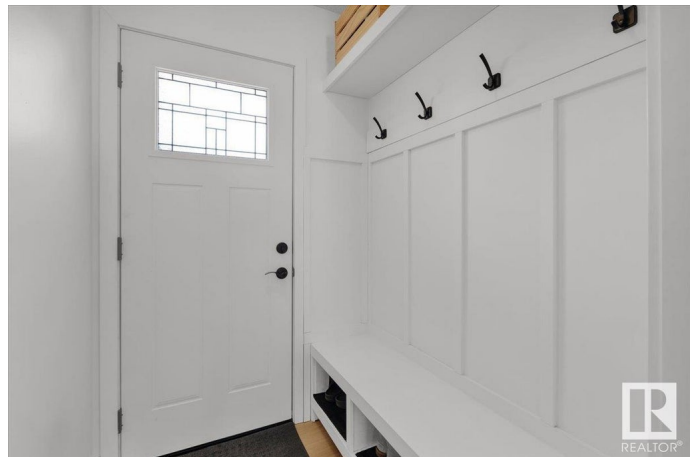
Kildare, Edmonton, AB

This beautifully upgraded bungalow home with oversized double heated garage(26x22). This house is renovated and move- in ready in a fantastic walkable neighbourhood! The bright main floor features updated entry storage, renovated kitchen with tons of customized storage, chef pantry, and updated appliances. There are 3 generous bedrooms on main floor with 4 pc bath and another bedroom in basement with 4 pc bath. Basement offers tons of space including a rec room with a wet bar and laundry room. Recent upgrades include: LVP flooring (2024), kitchen remodel (2024) with new refrigerator and dishwasher (2023), new front/ back doors (2022) landscaping (2021), garage insulation and furnace/ gas line (2022), basement bathroom remodel (2023), carpet tile and linoleum tile (2025). The heated and insulated garage offers plenty of space, plus an additional shed in yard. The fully fenced yard also features extra parking/ RV storage pad, mature fruit trees, and easy to maintain landscaping.

Built in 1967

Essential Information

| | |
|----------|-----------|
| MLS® # | E4432735 |
| Price | \$450,000 |
| Bedrooms | 4 |



| | |
|----------------|------------------------|
| Bathrooms | 2.00 |
| Full Baths | 2 |
| Square Footage | 1,064 |
| Acres | 0.00 |
| Year Built | 1967 |
| Type | Single Family |
| Sub-Type | Detached Single Family |
| Style | Bungalow |
| Status | Active |

Community Information

| | |
|-------------|-----------------|
| Address | 7212 138 Avenue |
| Area | Edmonton |
| Subdivision | Kildare |
| City | Edmonton |
| County | ALBERTA |
| Province | AB |
| Postal Code | T5C 2L8 |

Amenities

| | |
|-----------|---|
| Amenities | Deck, Hot Water Natural Gas, Parking-Extra, Wet Bar |
| Parking | Double Garage Detached, RV Parking |

Interior

| | |
|--------------|---|
| Appliances | Dishwasher-Built-In, Dryer, Garage Control, Garage Opener, Hood Fan, Oven-Microwave, Refrigerator, Storage Shed, Stove-Electric, Washer, Refrigerators-Two, Garage Heater |
| Heating | Forced Air-1, Natural Gas |
| Stories | 2 |
| Has Basement | Yes |
| Basement | Full, Finished |

Exterior

| | |
|-------------------|--|
| Exterior | Wood, Stucco |
| Exterior Features | Back Lane, Fenced, Flat Site, Fruit Trees/Shrubs, Landscaped, Low Maintenance Landscape, Park/Reserve, Public Transportation, Schools, Shopping Nearby |
| Roof | Asphalt Shingles |
| Construction | Wood, Stucco |

Foundation Concrete Perimeter

School Information

Elementary Kildare, St Anne
Middle Londonderry, Cardinal Leger
High MELezerte, O'Leary

Additional Information

Date Listed April 25th, 2025
Days on Market 17
Zoning Zone 02

DATA IS DEEMED RELIABLE BUT IS NOT GUARANTEED ACCURATE BY THE REALTORS® ASSOCIATION OF EDMONTON. COPYRIGHT 2025 BY THE REALTORS® ASSOCIATION OF EDMONTON. ALL RIGHTS RESERVED.Trademarks are owned or controlled by the Canadian Real Estate Association (CREA) and identify real estate professionals who are members of CREA (REALTOR®, REALTORS®) and/or the quality of services they provide (MLS®, Multiple Listing Service®)
Listing information last updated on May 12th, 2025 at 5:47am MDT