

\$715,250 - 1237 16a Avenue, Edmonton

MLS® #E4415754

\$715,250

4 Bedroom, 3.00 Bathroom, 2,477 sqft
Single Family on 0.00 Acres

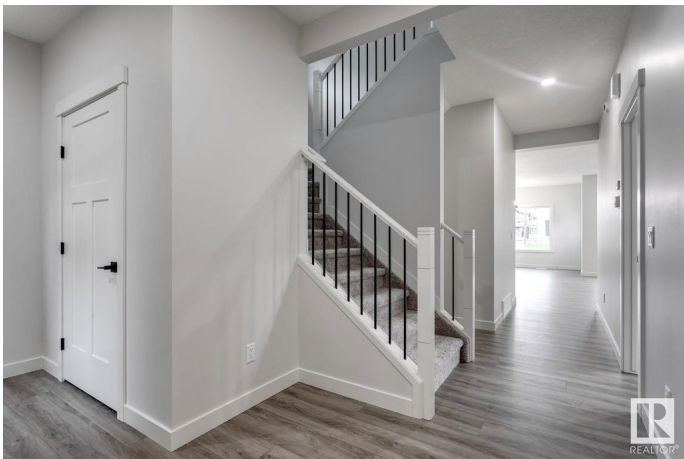
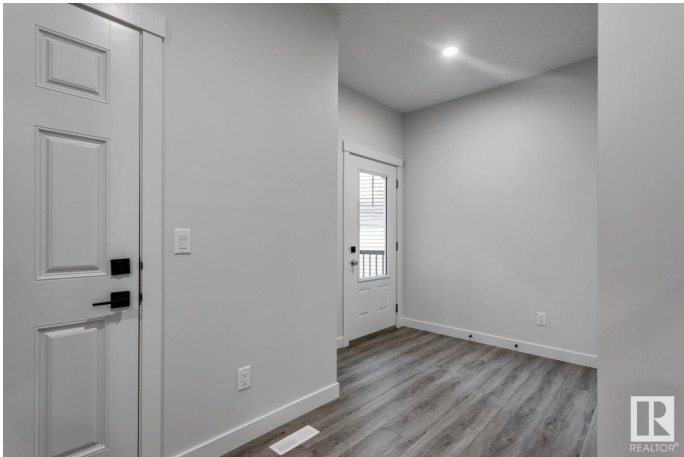
Aster, Edmonton, AB

The Accolade is a 2477 sq. ft. Evolve model with an oversized double attached garage, separate side entrance, 9' ceilings, and Luxury Vinyl Plank flooring throughout the main. The foyer has a coat closet, walk-in closet, and 3pc bath. A bedroom with a walk-in closet leads to the open kitchen, nook, and great room. The kitchen features quartz countertops, an island, Silgranit sink, Moen â€œIndieâ€ faucet, microwave shelf, chimney-style hood fan, full-height backsplash, and Thermofoil cabinets with soft-close doors. It also has a large pantry and recessed & pendant lighting. A full spice kitchen is off the kitchen. The great room and nook offer large windows and a garden door to the backyard. The primary suite includes a walk-in closet and a 5-piece ensuite. Upstairs, there's a bonus room, 3pc bath, laundry, and three bedrooms. Features include an appliance package, upgraded railings, basement rough-in plumbing, and extra side windows.

Built in 2024

Essential Information

MLS® #	E4415754
Price	\$715,250
Bedrooms	4
Bathrooms	3.00



Full Baths	3
Square Footage	2,477
Acres	0.00
Year Built	2024
Type	Single Family
Sub-Type	Detached Single Family
Style	2 Storey
Status	Active

Community Information

Address	1237 16a Avenue
Area	Edmonton
Subdivision	Aster
City	Edmonton
County	ALBERTA
Province	AB
Postal Code	T6T 2V1

Amenities

Amenities	Ceiling 9 ft., No Animal Home, No Smoking Home, See Remarks
Parking Spaces	4
Parking	Double Garage Attached

Interior

Interior Features	ensuite bathroom
Appliances	Dishwasher-Built-In, Dryer, Garage Control, Garage Opener, Refrigerator, Stove-Electric, Washer
Heating	Forced Air-1, Natural Gas
Fireplace	Yes
Fireplaces	Insert
Stories	2
Has Basement	Yes
Basement	Full, Unfinished

Exterior

Exterior	Wood, Stone, Vinyl
Exterior Features	Park/Reserve, Playground Nearby, Schools, Shopping Nearby
Roof	Asphalt Shingles
Construction	Wood, Stone, Vinyl

Foundation Concrete Perimeter

School Information

Elementary Jackson Heights School
Middle Thelma Chalifoux School
High Dr. Francis Whiskeyjack

Additional Information

Date Listed December 10th, 2024
Days on Market 139
Zoning Zone 30

DATA IS DEEMED RELIABLE BUT IS NOT GUARANTEED ACCURATE BY THE REALTORS® ASSOCIATION OF EDMONTON. COPYRIGHT 2025 BY THE REALTORS® ASSOCIATION OF EDMONTON. ALL RIGHTS RESERVED.Trademarks are owned or controlled by the Canadian Real Estate Association (CREA) and identify real estate professionals who are members of CREA (REALTOR®, REALTORS®) and/or the quality of services they provide (MLS®, Multiple Listing Service®)
Listing information last updated on April 28th, 2025 at 6:32pm MDT