

\$6,825,000 - Rr 260 Twp Rd 544, Rural Sturgeon County

MLS® #E4357025

\$6,825,000

0 Bedroom, 0.00 Bathroom,
Land Commercial on 0.00 Acres

Pro North Industrial Park, Rural Sturgeon
County, AB

An extension to the existing PRO-NORTH Industrial Park. This 78.30 acre parcel is an excellent opportunity for future subdivision of Medium Industrial lots and or subdivide to an owner-user for larger lots. The parcel has been approved by Sturgeon County for subdivision. it is currently zoned as Medium Industrial un-serviced. There are options for services to each of the subdivide lots. Access is direct via TWP Rd 544 to Highway 2 and Range Road 260 to Highway 37 and Villeneuve Rd Hwy 633. Only 10 minutes from north St. Albert on paved roads, 3 K north of Costco and 4 K west. Go to realtor's website for further information.

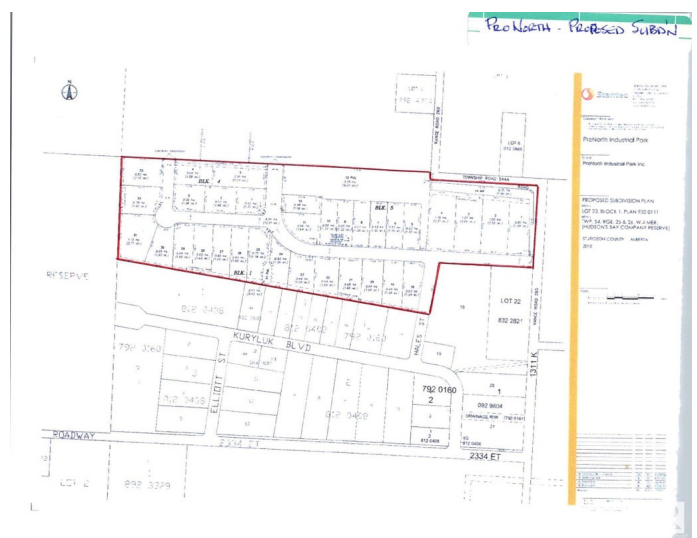
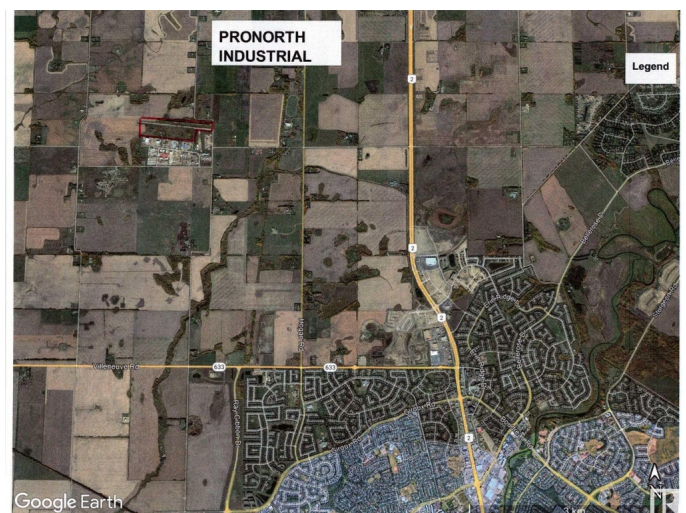
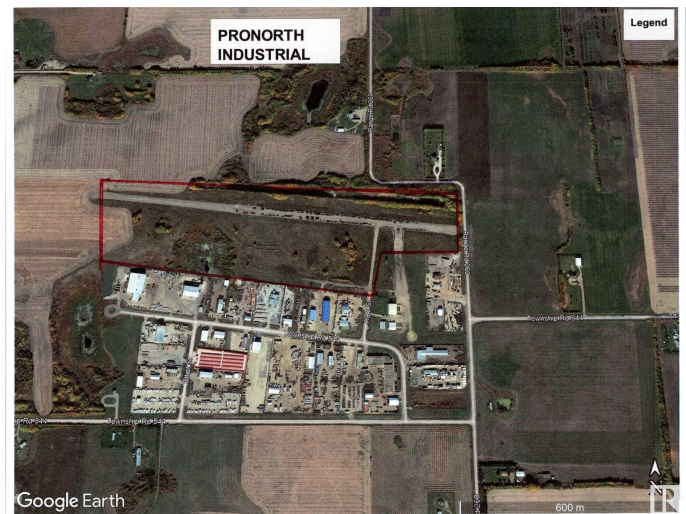
Built in 2000

Essential Information

MLS® #	E4357025
Price	\$6,825,000
Bathrooms	0.00
Acres	0.00
Year Built	2000
Type	Land Commercial
Status	Active

Community Information

Address Rr 260 Twp Rd 544



Area	Rural Sturgeon County
Subdivision	Pro North Industrial Park
City	Rural Sturgeon County
County	ALBERTA
Province	AB
Postal Code	T8T 0B6

Exterior

Exterior	See Remarks
Construction	See Remarks

Additional Information

Date Listed	September 1st, 2023
Days on Market	708
Zoning	Zone 60

DATA IS DEEMED RELIABLE BUT IS NOT GUARANTEED ACCURATE BY THE REALTORS® ASSOCIATION OF EDMONTON. COPYRIGHT 2025 BY THE REALTORS® ASSOCIATION OF EDMONTON. ALL RIGHTS RESERVED. Trademarks are owned or controlled by the Canadian Real Estate Association (CREA) and identify real estate professionals who are members of CREA (REALTOR®, REALTORS®) and/or the quality of services they provide (MLS®, Multiple Listing Service®)

Listing information last updated on August 9th, 2025 at 2:02pm MDT