

# \$755,000 - 53324 55 Range Road, Rural Parkland County

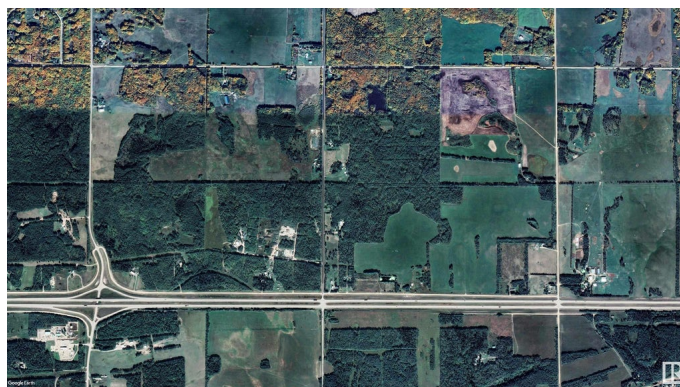
MLS® #E4299585

**\$755,000**

0 Bedroom, 0.00 Bathroom,  
Land Commercial on 0.00 Acres

Seba Beach, Rural Parkland County, AB

Serviced land parcel with partially developed production facility â€¢ Property currently demised as follows: 22,012 sq.ft.Â± steel frame building on 2.73 acresÂ± with services intended for a cannabis cultivation or food production upon completion â€¢ Excess land of 76.27 acresÂ± â€¢ All building plans and transferable permits included as part of the sale â€¢ Located just off HWY 16, North of Wabamun Lake and ~40 minutes from Edmonton city limits â€¢ Water well and an unquantified amount of gravel material to the excess land point

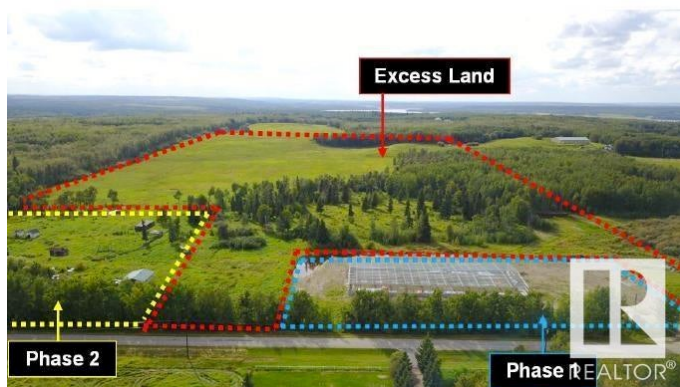


## Essential Information

MLS® #	E4299585
Price	\$755,000
Bathrooms	0.00
Acres	0.00
Type	Land Commercial
Status	Active

## Community Information

Address	53324 55 Range Road
Area	Rural Parkland County
Subdivision	Seba Beach
City	Rural Parkland County



County	ALBERTA
Province	AB
Postal Code	T0E 2B0

### **Additional Information**

Date Listed	June 14th, 2022
Days on Market	1152
Zoning	Zone 93

DATA IS DEEMED RELIABLE BUT IS NOT GUARANTEED ACCURATE BY THE REALTORS® ASSOCIATION OF EDMONTON. COPYRIGHT 2025 BY THE REALTORS® ASSOCIATION OF EDMONTON. ALL RIGHTS RESERVED. Trademarks are owned or controlled by the Canadian Real Estate Association (CREA) and identify real estate professionals who are members of CREA (REALTOR®, REALTORS®) and/or the quality of services they provide (MLS®, Multiple Listing Service®)

Listing information last updated on August 9th, 2025 at 2:02pm MDT