

\$0 - 10355 82 Avenue, Edmonton

MLS® #E4052342

\$0

0 Bedroom, 0.00 Bathroom,
Office on 0.00 Acres

Strathcona Junction, Edmonton, AB

Historic building in the heart of Whyte Avenue with upgraded facade, fully renovated common areas and upgraded HVAC. Sizes available include: 2,215 Sq. Ft. on the 2nd floor, 2138 sq. ft. on the 3rd floor, 1,130 Sq. Ft. on the 3rd floor and 2,873 Sq. Ft. on the lower level. Available immediately. Operating costs are \$14.79 inclusive of property tax, management, common area maintenance and utilities. Ideal for specialty retail, office, and creative spaces. Current Tenant incentive is one month of free net rent per year of the term signed!

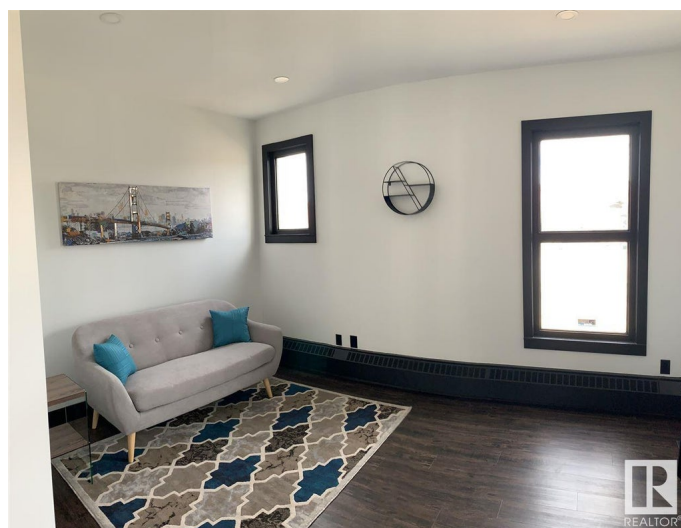
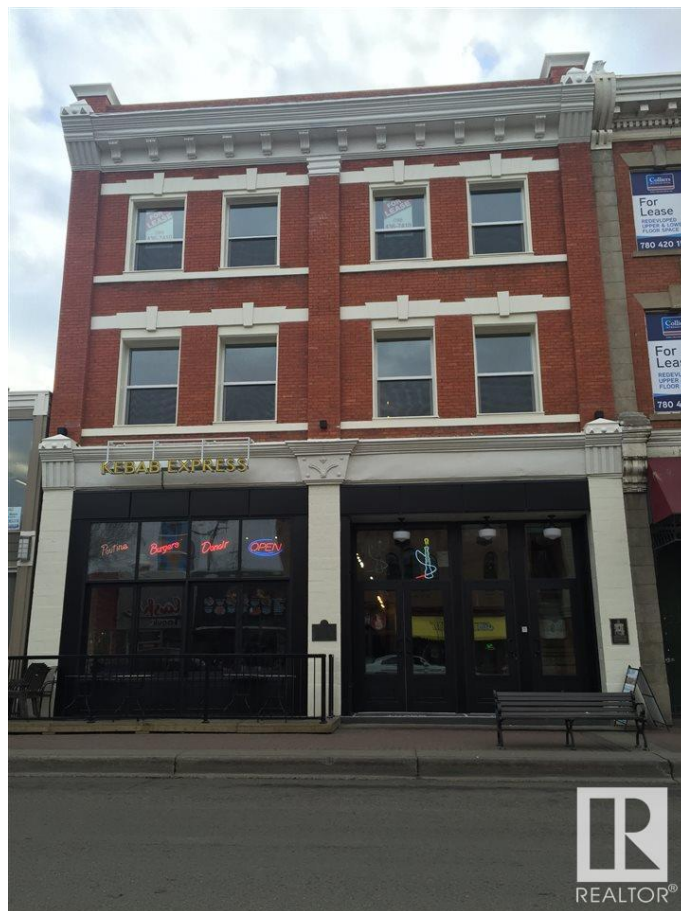
Built in 1960

Essential Information

MLS® #	E4052342
Bathrooms	0.00
Acres	0.00
Year Built	1960
Type	Office
Status	Active

Community Information

Address	10355 82 Avenue
Area	Edmonton
Subdivision	Strathcona Junction
City	Edmonton



County	ALBERTA
Province	AB
Postal Code	T6E 1Z9

Exterior

Exterior	Brick
Construction	Brick

Additional Information

Date Listed	February 24th, 2017
Days on Market	3074
Zoning	Zone 41

DATA IS DEEMED RELIABLE BUT IS NOT GUARANTEED ACCURATE BY THE REALTORS® ASSOCIATION OF EDMONTON. COPYRIGHT 2025 BY THE REALTORS® ASSOCIATION OF EDMONTON. ALL RIGHTS RESERVED. Trademarks are owned or controlled by the Canadian Real Estate Association (CREA) and identify real estate professionals who are members of CREA (REALTOR®, REALTORS®) and/or the quality of services they provide (MLS®, Multiple Listing Service®)

Listing information last updated on July 26th, 2025 at 5:02pm MDT